



# UniFi™

## Enterprise WiFi System

Models: UAP, UAP-LR, UAP-Pro, UAP-Outdoor, UAP-Outdoor5

**Unlimited Indoor/Outdoor AP Scalability in a Unified Management System**

**Breakthrough Capacity up to 750 Mbps**

**Intuitive UniFi Controller Software**

**Hotspot Management – Customization and Built-In Billing Options**





## Scalable and Unified Enterprise WiFi Management

The UniFi Enterprise WiFi System is a scalable enterprise access point solution designed to be easily deployed and managed. UniFi Access Point indoor models have a sleek design and can be easily mounted to a ceiling tile or wall using the included mounting hardware. UniFi Access Point outdoor models have a form factor built to last outdoors.

The UniFi Enterprise WiFi System includes the UniFi Controller software. The software installs on any PC or Mac within the network and is easily accessible through any standard Web browser. Using the UniFi Controller software, an Enterprise WiFi network can be instantly configured and administered without any special training. Real-time status, automatic UAP device detection, map loading, and advanced security options are all seamlessly integrated.

## Features

**Save money and save time** Unlike traditional enterprise WiFi systems utilizing a hardware WiFi switch, UniFi uses a virtual client/server application that requires zero cost and no additional hardware.

**Powerful Hardware** UniFi AP devices feature the latest in WiFi 802.11n technology, breakthrough speeds, and incredible range.

**Intuitive UniFi Controller Software** Install, configure, and manage all of your UniFi AP devices with the intuitive and easy-to-learn UniFi Controller user interface (no special training needed).

**Expandable** Unlimited scalability. Build wireless networks as small or big as needed. Start with one (or upgrade to a 3-pack) and expand to thousands while maintaining a single unified management system.

Product Comparison

	UniFi AP (UAP)	UniFi AP-LR (UAP-LR)	UniFi AP-Pro (UAP-Pro)	UniFi AP-Outdoor (UAP-Outdoor)	UniFi AP-Outdoor 5G (UAP-Outdoor5)
Speed*	300 Mbps	300 Mbps	300 + 450 Mbps	300 Mbps	300 Mbps
Range*	400'	600'	400'	600'	600'
Secondary Ethernet Port				√	√
Gigabit Ethernet			√		
2.4 GHz	√	√	√	√	
5 GHz			√		√
Simultaneous Dual-Band			√		
Ubiquiti PoE	√	√	√	√	√
802.3af Compliant			√		
Wall Mount	√	√	√	√	√
Ceiling Mount	√	√	√		
Pole Mount				√	√
Security Lock			√		
External Antennas				√	√
Usage	Indoors			Outdoors	

\* Speed and Range values may vary and are based on optimal environments.

# Indoor Models

## Features

**Easy Mounting** Sleek wall or ceiling mount design (all accessories included).

**Design** Aesthetic industrial design with a unique LED provisioning ring, which provides administrator location tracking and alerts for each device.

**Power over Ethernet (PoE)** Includes Power over Ethernet (PoE) functionality, which allows both power and data to be carried over a single Ethernet cable to the device.

The UniFi AP-Pro includes a Power Over Ethernet Gig E Adapter. It can also be powered by an 802.3af compliant switch.

UniFi indoor models available in single-pack and 3-pack.

Included:

- Wall and Ceiling Mount Adapter Kit
- Power Over Ethernet Adapter
- UniFi Controller Software Installation CD



### UniFi AP-Pro (UAP-Pro)

The fastest UniFi model with speeds of up to 300 Mbps in the 5 GHz radio band and up to 450 Mbps in the 2.4 GHz radio band. The UAP-Pro offers simultaneous dual-band operation with 2x2 and 3x3 MIMO technology. It has a range of up to 400 ft and 2 Gigabit Ethernet ports.



### UniFi AP-Long Range (UAP-LR)

The UAP-LR has a larger range than the base model UAP with a range of up to 600 ft. It also offers 802.11n MIMO, with speeds of up to 300 Mbps.



### UniFi AP (UAP)

Our standard model 802.11n MIMO UniFi AP. Capable of speeds up to 300 Mbps with a range of up to 400 ft.

## Outdoor Models

All the same features packed in the indoor UniFi models, but in a form factor built to last outdoors.

### Features

**Easy Mounting** Sleek wall or pole mount design (all accessories included).

#### Design for the Great Outdoors

Weather-resistant case designed specifically for outdoor installations. Dual, omni-directional antennas provide for complete 360° wireless coverage.

**2G or 5G Models** Choose the frequency best suited to your environment - 2 GHz (UAP-Outdoor) or 5 GHz (UAP-Outdoor5). Both models offer astonishing range of up to 600 ft.

**Power over Ethernet (PoE)** Includes Power over Ethernet (PoE) functionality, which allows both power and data to be carried over a single Ethernet cable to the device.

UniFi outdoor models available in single-pack.

Included:

- Wall and Pole Mount Kit
- Power Over Ethernet Adapter
- UniFi Controller Software Installation CD



### UniFi AP-Outdoor (UAP-Outdoor)

Take UniFi outdoors and link farther than the standard UAP with the UAP-Outdoor. The UAP-Outdoor includes 2 external omni antennas and a secondary Ethernet port for bridging. It supports 802.11n MIMO, with speeds of up to 300 Mbps and a range of up to 600 ft.



### UniFi AP-Outdoor 5G (UAP-Outdoor5)

Outdoor UniFi model operates in the 5 GHz frequency spectrum. The UAP-Outdoor5 includes 2 external omni antennas and a secondary Ethernet port for bridging. It supports 802.11n MIMO, with speeds of up to 300 Mbps and a range of up to 600 ft.

# UniFi Controller Software

## Packed with Features

After the UniFi Controller software is installed on a Mac or PC, the UniFi Controller can be accessed through any device using a Web browser. The UniFi Controller allows the administrator to instantly provision thousands of UniFi APs, map out networks, quickly manage system traffic, and further provision individual UniFi AP devices.

## Users and Guests

Keep track and control access of specific users and guests connected to your network(s).

## Remote Firmware Upgrade

Save time and effort by remotely upgrading device firmware.

## Guest Portal/Hotspot Support

Easy customization and advanced options for Guest Portals include authentication, Hotspot setup options, and the ability to run as an external portal server. Take advantage of UniFi's rate limiting for your Guest Portal and Hotspot package offerings. Apply different bandwidth rates (download/upload), limit total data usage, and limit duration of use.

All UniFi APs include Hotspot functionality:

- Built-in support for billing integration using major credit cards via PayPal™.
- Built-in support for voucher-based authentication.
- Built-in Hotspot Manager for voucher creation, guest management, and payment refund.
- Full customization of Hotspot portal pages.

## Google Maps™ Integration

Upload your own custom coverage maps or configure your map using the built-in Google Maps API.

## Events and Alerts

UniFi makes it easy to view and set up email delivery of alerts and recent event notifications on your network(s).

## One UniFied Network

Option to create one large wireless network across multiple APs that lets users seamlessly roam.

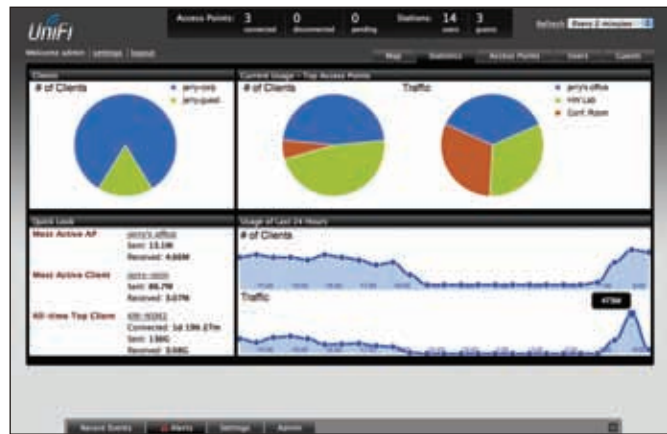
## L3 Manageability

With L3 manageability, the UniFi Controller software can be run on a different subnet than the UniFi APs it manages, allowing "no-touch" AP provisioning.



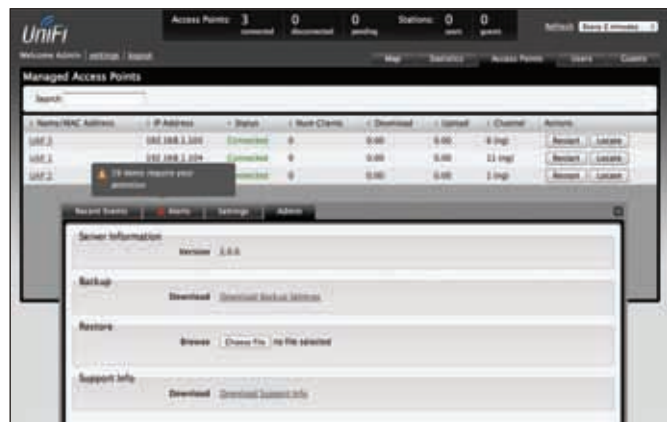
## Maps

Upload map images of your location(s) for a visual representation of your wireless network.



## Statistics

UniFi organizes and visualizes your network(s) traffic in clear and easy-to-read graphs.



## Access Points (APs)

Easily install, configure, and manage all access points from one location.

# Extend Your Coverage

With the UniFi Controller software running in a NOC or in the cloud, administrators can extend and centrally manage wide areas of indoor and outdoor coverage using any combination of UniFi AP devices.

Below are some examples of how UniFi APs can be deployed.



**Extend Wirelessly** Take advantage of wireless downlinking. One wired UniFi AP uplink supports 4 wireless downlinks, allowing wireless adoption of devices in their default state and real-time changes to network topology.

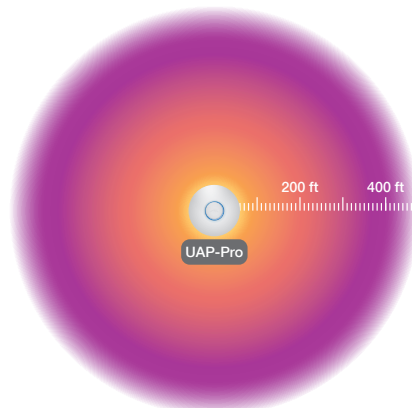
**Manage Hotspots and Control Billing** Use Hotspot Manager to customize portal login pages and bill customers using major credit cards via PayPal™. Or, use Hotspot Manager to set up a voucher-based authentication system for voucher creation, user administration, guest management, and payment refunds.

# Specifications (UAP-Pro)

UniFi AP Pro	
Dimensions	20 x 20 x 3.65 cm
Weight	298 g (358 g with Mounting Kits)
Networking Interface	(2) 10/100/1000 Ethernet Ports
Buttons	Reset
Wi-Fi Standards	802.11 a/b/g/n
Power Method	Passive Power over Ethernet (48V), 802.3af Supported
Power Supply	48V, 0.5A PoE Adapter (Included)
Maximum Power Consumption	12W
BSSID	Up to Four Per Radio
Power Save	Supported
Wireless Security	WEP, WPA-PSK, WPA-TKIP, WPA2 AES, 802.11i
Certifications	CE, FCC, IC
Mounting	Wall/Ceiling (Kits Included)
Operating Temperature	-10 to 70°C (14 to 158° F)
Operating Humidity	5 - 80% Condensing
Antennas	
2.4 GHz	3 Integrated (Supports 3x3 MIMO with Spatial Diversity)
5 GHz	2 Integrated (Supports 2x2 MIMO with Spatial Diversity)
Max. TX Power	
2.4 GHz	30 dBm
5 GHz	22 dBm

Advanced Traffic Management	
VLAN	802.1Q
Advanced QoS	Per-User Rate Limiting
Guest traffic isolation	Supported
WMM	Voice, Video, Best Effort, and Background
Concurrent Clients	200+

Supported Data Rates (Mbps)	
Standards	Data Rates
802.11a	6, 9, 12, 18, 24, 36, 48, 54 Mbps
802.11n (2.4 GHz 3x3)	6.5 Mbps to 450 Mbps (MCS0 - MCS23, HT 20/40)
802.11n (5 GHz 2x2)	6.5 Mbps to 300 Mbps (MCS0 - MCS15, HT 20/40)
802.11b	1, 2, 5.5, 11 Mbps
802.11g	6, 9, 12, 18, 24, 36, 48, 54 Mbps



 [www.ubnt.com/unifi](http://www.ubnt.com/unifi)

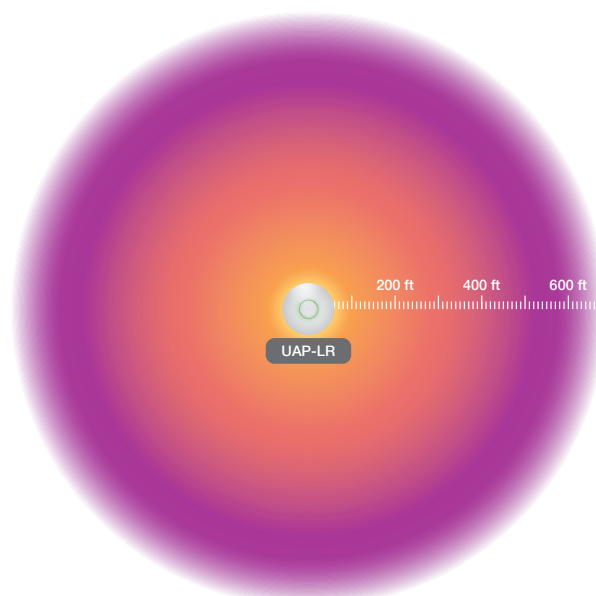
# Specifications (UAP-LR)

UniFi AP Long-Range	
Dimensions	20 x 20 x 3.65 cm
Weight	290 g (430 g with Mounting Kits)
Networking Interface	(1) 10/100 Ethernet Port
Buttons	Reset
Antennas	2 Integrated (Supports 2x2 MIMO with Spatial Diversity)
Wi-Fi Standards	802.11 b/g/n*
Power Method	Passive Power over Ethernet (12-24V)
Power Supply	24V, 0.5A PoE Adapter Included
Maximum Power Consumption	6W
Max TX Power	27 dBm
BSSID	Up to Four Per Radio
Power Save	Supported
Wireless Security	WEP, WPA-PSK, WPA-TKIP, WPA2 AES, 802.11i
Certifications	CE, FCC, IC
Mounting	Wall/Ceiling (Kits Included)
Operating Temperature	-10 to 70°C (14 to 158° F)
Operating Humidity	5 - 80% Condensing

Advanced Traffic Management	
VLAN	802.1Q
Advanced QoS	Per-User Rate Limiting
Guest Traffic Isolation	Supported
WMM	Voice, Video, Best Effort, and Background
Concurrent Clients	100+

Supported Data Rates (Mbps)	
Standards	Data Rates
802.11n	6.5 Mbps to 300 Mbps (MCS0 - MCS15, HT 20/40)
802.11b	1, 2, 5.5, 11 Mbps
802.11g	6, 9, 12, 18, 24, 36, 48, 54 Mbps

\* 2.4 GHz





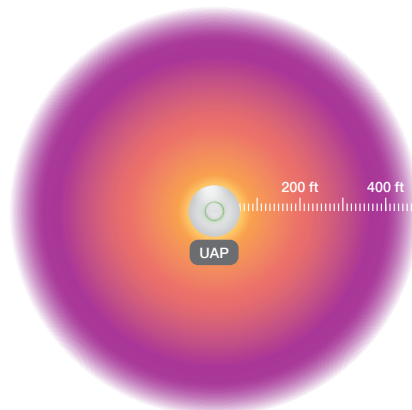
# Specifications (UAP)

UniFi AP	
Dimensions	20 x 20 x 3.65 cm
Weight	290 g (430 g with Mounting Kits)
Networking Interface	(1) 10/100 Ethernet Port
Buttons	Reset
Antennas	2 Integrated (Supports 2x2 MIMO with Spatial Diversity)
Wi-Fi Standards	802.11 b/g/n*
Power Method	Passive Power over Ethernet (12-24V)
Power Supply	24V, 0.5A PoE Adapter Included
Maximum Power Consumption	4W
Max TX Power	20 dBm
BSSID	Up to Four Per Radio
Power Save	Supported
Wireless Security	WEP, WPA-PSK, WPA-TKIP, WPA2 AES, 802.11i
Certifications	CE, FCC, IC
Mounting	Wall/Ceiling (Kits Included)
Operating Temperature	-10 to 70°C (14 to 158° F)
Operating Humidity	5 - 80% Condensing

Advanced Traffic Management	
VLAN	802.1Q
Advanced QoS	Per-User Rate Limiting
Guest Traffic Isolation	Supported
WMM	Voice, Video, Best Effort, and Background
Concurrent Clients	100+

Supported Data Rates (Mbps)	
Standards	Data Rates
802.11n	6.5 Mbps to 300 Mbps (MCS0 - MCS15, HT 20/40)
802.11b	1, 2, 5.5, 11 Mbps
802.11g	6, 9, 12, 18, 24, 36, 48, 54 Mbps

\* 2.4 GHz



 [www.ubnt.com/unifi](http://www.ubnt.com/unifi)

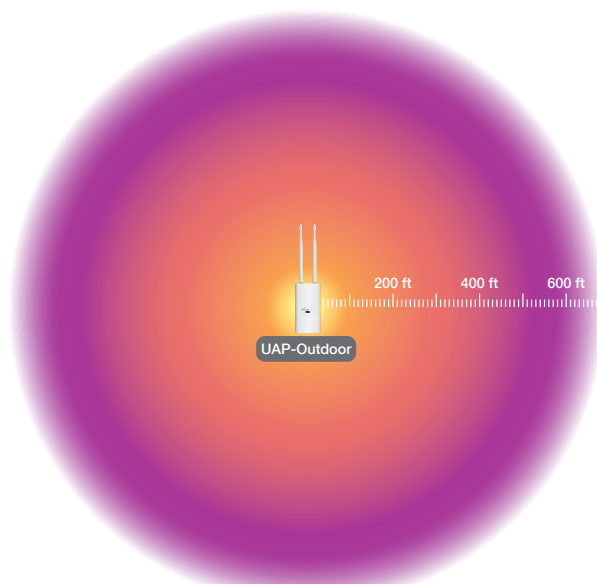
# Specifications (UAP-Outdoor)

UniFi AP-Outdoor	
Dimensions	17 x 8 x 3 cm
Weight	500 g (Without Antennas) 540 g (With Both Antennas)
Networking Interface	(2) 10/100 Ethernet Ports
Buttons	Reset
Antennas	(2) External 6 dBi Omni Antennas Included 191 mm (Length), 13mm (Diameter)
Wi-Fi Standards	802.11 b/g/n*
Power Method	Passive Power over Ethernet (12-24V)
Power Supply	24V, 1A PoE Adapter Included
Maximum Power Consumption	4.6 Watts
Max TX Power	27 dBm
BSSID	Up to Four Per Radio
Power Save	Supported
Wireless Security	WEP, WPA-PSK, WPA-TKIP, WPA2 AES, 802.11i
Certifications	CE, FCC, IC
Mounting	Wall/Ceiling (Kits Included)
Operating Temperature	-30 to 75°C (-22 to 167° F)
Operating Humidity	5 - 95% Condensing

Advanced Traffic Management	
VLAN	802.1Q
Advanced QoS	Per-User Rate Limiting
Guest Traffic Isolation	Supported
WMM	Voice, Video, Best Effort, and Background
Concurrent Clients	100+

Supported Data Rates (Mbps)	
Standards	Data Rates
802.11n	6.5 Mbps to 300 Mbps (MCS0 - MCS15, HT 20/40)
802.11b	1, 2, 5.5, 11 Mbps
802.11g	6, 9, 12, 18, 24, 36, 48, 54 Mbps

\* 2.4 GHz



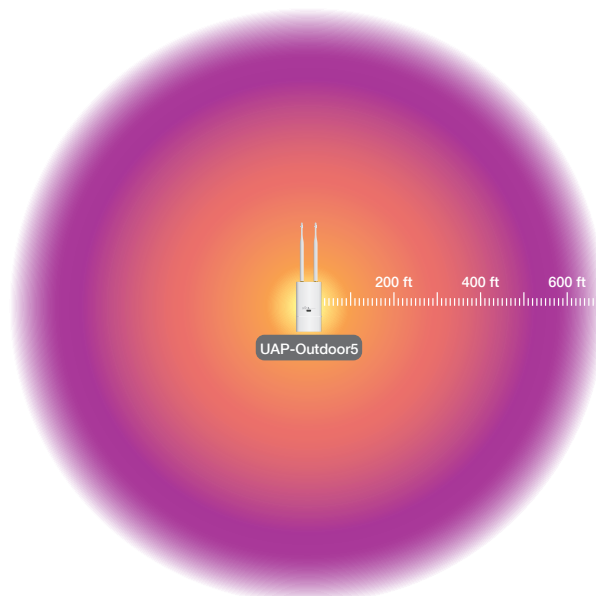
# Specifications (UAP-Outdoor5)

UniFi AP-Outdoor 5G (UAP-Outdoor 5)	
Dimensions	17 x 8 x 3 cm
Weight	500 g (Without Antennas) 540 g (With Both Antennas)
Networking Interface	(2) 10/100 Ethernet Ports
Buttons	Reset
Antennas	(2) External 6 dBi Omni Antennas Included 191 mm (Length), 13 mm (Diameter)
Wi-Fi Standards	802.11a/n*
Power Method	Passive Power over Ethernet (12-24V)
Power Supply	24V, 1A PoE Adapter Included
Max. Power Consumption	6.5 W
Max. TX Power	27 dBm
BSSID	Up to Four Per Radio
Power Save	Supported
Wireless Security	WEP, WPA-PSK, WPA-TKIP, WPA2 AES, 802.11i
Certifications	CE, FCC, IC
Mounting	Wall and Pole (Kits Included)
Operating Temperature	-30 to 75°C (-22 to 167° F)
Operating Humidity	5 to 95% Condensing

Advanced Traffic Management	
VLAN	802.1Q
Advanced QoS	Per-User Rate Limiting
Guest Traffic Isolation	Supported
WMM	Voice, Video, Best Effort, and Background
Concurrent Clients	100+

Supported Data Rates (Mbps)	
Standards	Data Rates
802.11a	6, 9, 12, 18, 24, 36, 48, 54 Mbps
802.11n	6.5 Mbps to 300 Mbps (MCS0 - MCS15, HT 20/40)

\* 5 GHz



 [www.ubnt.com/unifi](http://www.ubnt.com/unifi)

# TOUGH Cable™

## OUTDOOR CARRIER CLASS SHIELDED

Protect your networks from the most brutal environments with Ubiquiti's industrial-grade shielded Ethernet cable, TOUGH Cable.

### Increase Performance

Dramatically improve your Ethernet link states, speeds, and overall performance with Ubiquiti TOUGH Cables.

### Extreme Weatherproof

TOUGH Cables have been built to perform even in the harshest weather and environments.

### ESD Damage Protection

Protect your networks from devastating electrostatic discharge (ESD) attacks.

### Extended Cable Support

TOUGH Cables have been developed to increase power handling performance for extended cable run lengths.

### Bulletproof your networks

TOUGH Cable is currently available in two versions: Level 1 Shielding Protection and Level 2 Shielding Protection.

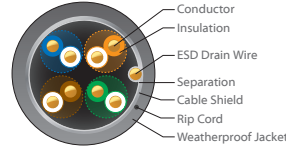
**Level 1** is a Category 5e outdoor carrier-class shielded cable with an integrated electrostatic drain wire.

**Level 2** is a Category 5e outdoor carrier-class shielded cable that features an Anti-Crosstalk Divider and additional shielding. It is rated to provide optimal performance on Gigabit Ethernet networks.

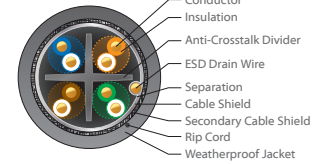
### Additional Information:

- 24 AWG copper conductor pairs
- 26 AWG integrated ESD drain wire to prevent ESD attacks & damage
- PE outdoor-rated weatherproof jacket
- Multi-layered shielding
- Available in 1000 ft (304.8 m) length

### LEVEL 1 SHIELDING PROTECTION



### LEVEL 2 SHIELDING PROTECTION

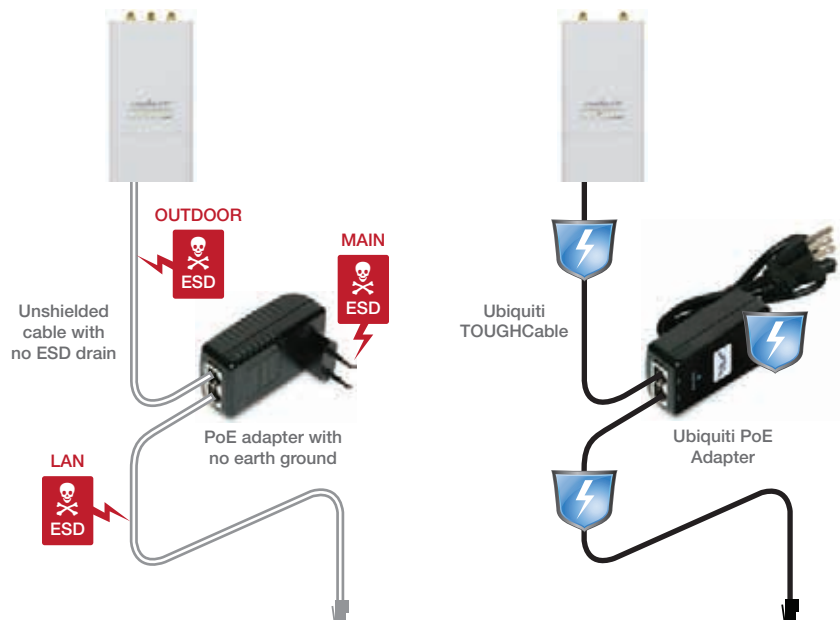


### TOUGH Cable Connectors

Specifically designed for use with Ubiquiti TOUGH Cables and available in 100 pc. bags, TOUGH Cable Connectors protect against ESD attacks and Ethernet hardware damage while allowing rapid field deployment without soldering.

ESD attacks are overwhelmingly the leading cause for device failures. The diagram below illustrates the areas vulnerable to ESD attacks in a defenseless network.

Use a grounded Ubiquiti Power over Ethernet (PoE) adapter along with Ubiquiti TOUGH Cable and TOUGH Cable Connectors to effectively protect against ESD attacks.



[www.ubnt.com/toughcable](http://www.ubnt.com/toughcable)

TERMS OF USE: The Ubiquiti radio device must be professionally installed. Shielded Ethernet cable and earth grounding must be used as conditions of product warranty. It is the installers responsibility to follow local country regulations including operation within legal frequency channels, output power, and Dynamic Frequency Selection (DFS) requirements.

For further information, please visit [www.ubnt.com](http://www.ubnt.com).

All specifications in this document are subject to change without notice.

© 2012 Ubiquiti Networks, Inc. All rights reserved.

PHRR022912

 [www.ubnt.com](http://www.ubnt.com)