



Best Practices for Installation of the airFiber AF-5/AF-5U

Ideal Mounting Location: High in Elevation with Clear Line of Sight

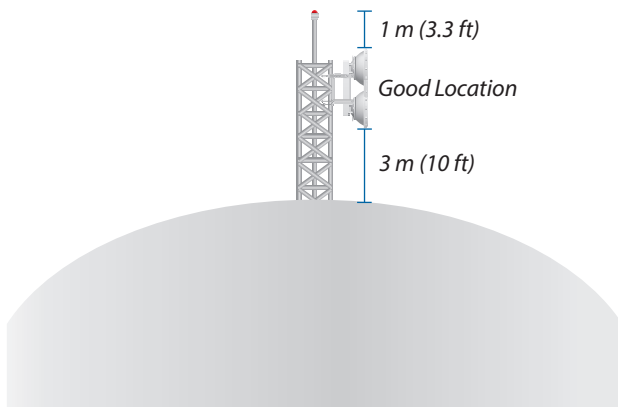
Custom Frequency and Transmit Power Configuration to Fit Your Application

Throughout Optimization with Maximum Frequency Reuse and Link Symmetry

Selection of Installation Site

The airFiber® AF-5/AF-5U, referred to as the AF-5 in this Design Guide, features unique functionality that requires you to be cognizant of the installation environment.

For best performance, you must install the AF-5 as high up as possible, with a line of sight free from obstructions. This is especially true in FDD (Frequency Division Duplexing) mode, as there is a requirement to maximize channel/spectrum reuse. Any objects in front of or near the front of the AF-5 can have a significant impact on overall performance. The AF-5 should be installed 1 m (3.3 ft) below the highest point of the structure to reduce the risk of a lightning strike. When the AF-5 must be installed above a metallic surface like a corrugated flat roof or water tower, you should ensure that the AF-5 is located more than 3 m (10 ft) above the metal/reflective surface.

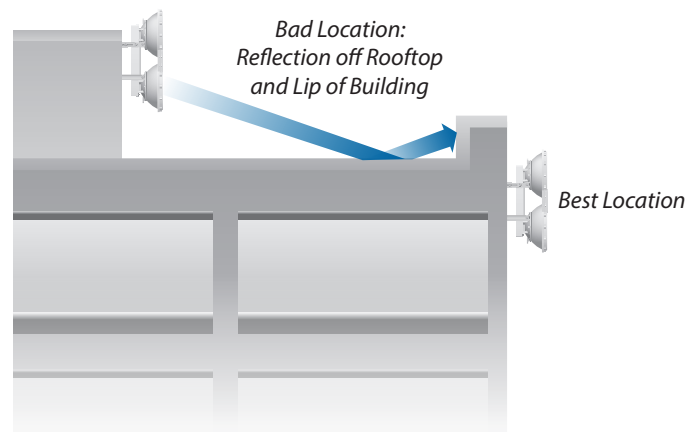


Close-up of Installation on Top of Water Tower

What is generally true for cellular installations is true for the AF-5. You should mount the AF-5 where it can see no reflections in the near field, so we recommend the following types of mounting sites:

- Perimeter mounting on a water tower/structure (best)
- Mounting near the edge of the top of a structure
- Mounting on an elevated mast or tower

Radios that are mounted anywhere near the surface of a roof or the top of a water tower can be significantly affected by reflections. FDD is more susceptible to the elements of a deployment environment than TDD (Time Division Duplexing) is.

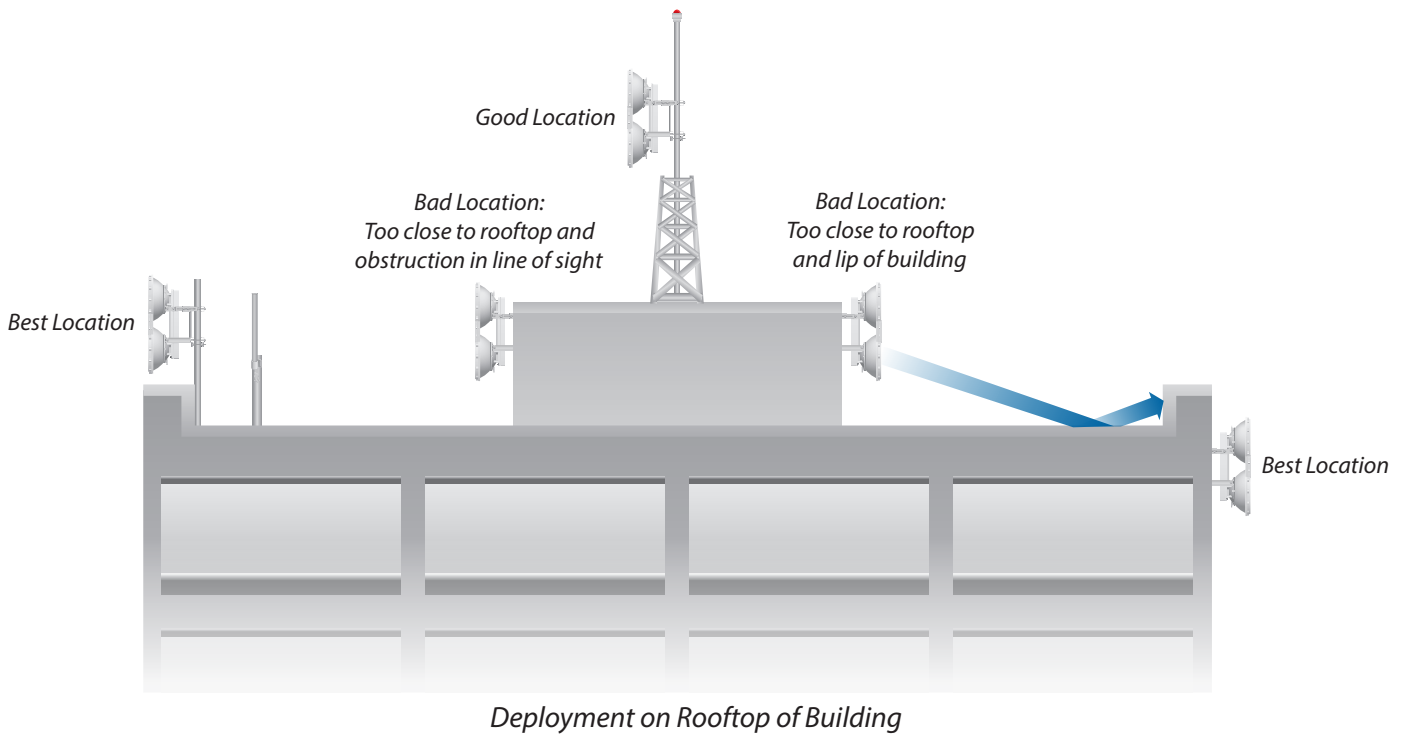
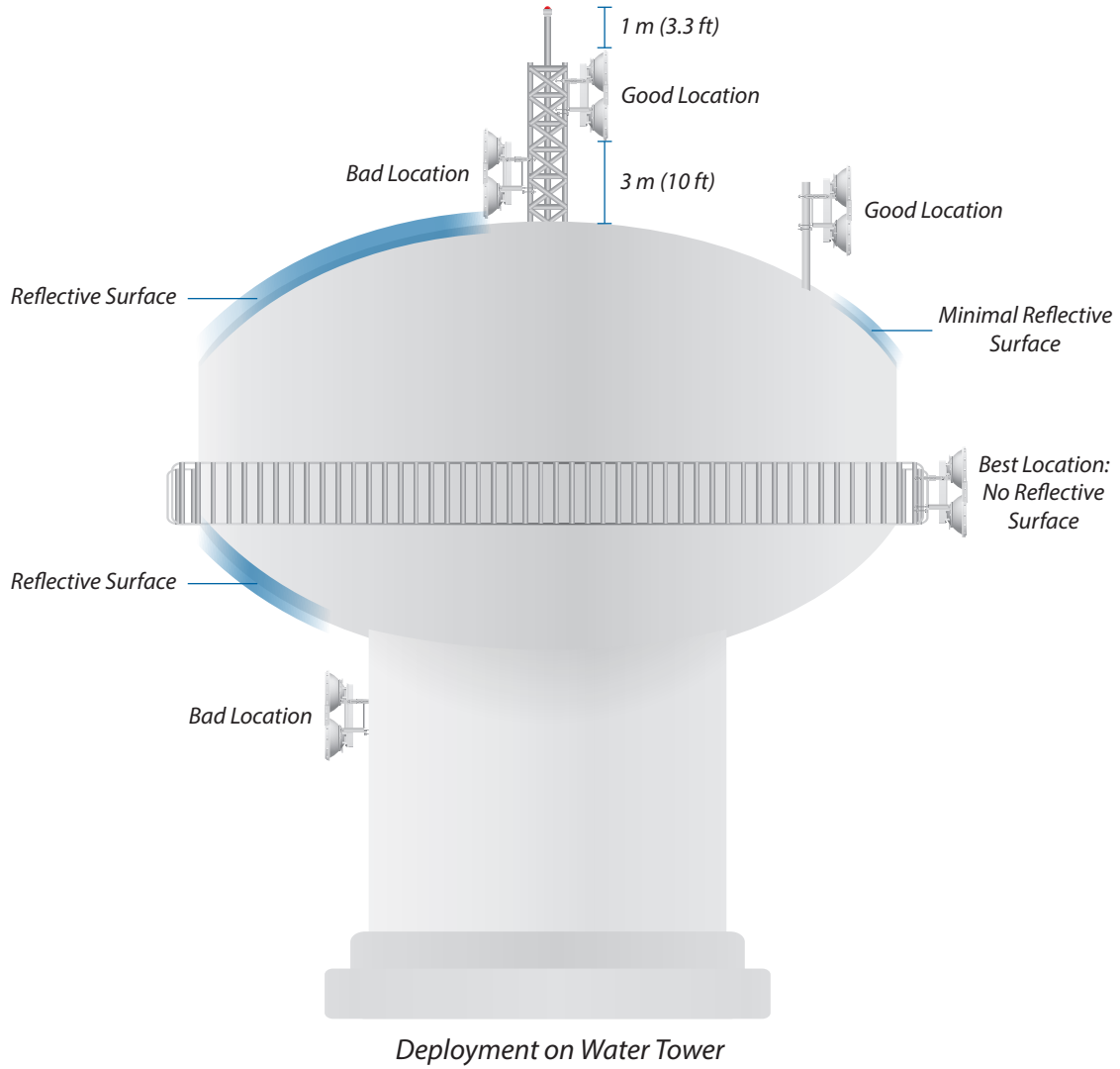


Close-up of Installation on Rooftop of Building

Good and bad examples of deployments are depicted in this section, "[Typical Deployment Scenarios](#)" on page 2.



Typical Deployment Scenarios



Frequency Configuration

FDD will be most useful in situations that have plenty of spectrum available and will show the greatest benefit on shorter-range links. For optimal performance, you should plan out channel pairs that have maximum frequency separation. Since the AF-5 uses sophisticated data processing algorithms and a special antenna structure to eliminate the need for a pre-configured duplexing filter, you should space the two duplex channels at either end of the spectrum near the band edges for maximum-range applications.

Generally speaking, you can configure shorter-range links for less channel separation between uplink and downlink. You should also use the narrowest channel bandwidth that supports the intended link capacity. This conserves valuable frequency resources and also maximizes link budgets.

The airFiber5 Configuration Interface includes the Link Calculator* configuration tool that will guide you on how to best minimize bandwidth and power/interference based on the specific requirements of your installation.

The screenshot shows the 'airFiber5 Link Calculator' interface. At the top, it displays 'Range 5.0 miles', 'Margin 6 dB', 'Min Power 15 dBm', and 'Max Power 47 dBm'. Below this are three columns: TDD, FDD Downlink, and FDD Uplink. Each column contains various parameters such as Channel Bandwidth, Transmit Power, Modulation Rate, Aggregate Capacity, Receive Power, Frequency, Required Capacity, and a list of bandwidth options (10 MHz, 20 MHz, 30 MHz, 40 MHz, 50 MHz) with checkboxes. A 'Calculate' button is located at the bottom right of the interface.

Parameter	TDD	FDD Downlink	FDD Uplink
Channel Bandwidth	20 MHz	10 MHz	10 MHz
Transmit Power	34 dBm	31 dBm	31 dBm
Modulation Rate	6x <64-QAM>	6x <64-QAM>	6x <64-QAM>
Aggregate Capacity	145.92 Mbps	69.12 Mbps	69.12 Mbps
Receive Power	-69.83 dBm	-72.83 dBm	-72.98 dBm
Frequency	5800 MHz	5800 MHz	5900 MHz
Required Capacity	100 Mbps	50 Mbps	50 Mbps
Bandwidth	<input checked="" type="checkbox"/> 10 MHz <input checked="" type="checkbox"/> 20 MHz <input checked="" type="checkbox"/> 30 MHz <input checked="" type="checkbox"/> 40 MHz <input checked="" type="checkbox"/> 50 MHz	<input checked="" type="checkbox"/> 10 MHz <input checked="" type="checkbox"/> 20 MHz <input checked="" type="checkbox"/> 30 MHz <input checked="" type="checkbox"/> 40 MHz <input checked="" type="checkbox"/> 50 MHz	<input checked="" type="checkbox"/> 10 MHz <input checked="" type="checkbox"/> 20 MHz <input checked="" type="checkbox"/> 30 MHz <input checked="" type="checkbox"/> 40 MHz <input checked="" type="checkbox"/> 50 MHz

This screenshot shows the 'airFiber5 Link Calculator' interface with different configuration values. The 'Range' is now '50.0 miles'. The 'TDD' column has empty fields for Channel Bandwidth, Transmit Power, Aggregate Capacity, and Receive Power. The 'FDD Downlink' and 'FDD Uplink' columns show updated values for all parameters. The 'Calculate' button remains at the bottom right.

Parameter	TDD	FDD Downlink	FDD Uplink
Channel Bandwidth	—	30 MHz	30 MHz
Transmit Power	—	45 dBm	45 dBm
Modulation Rate	—	4x <16-QAM>	4x <16-QAM>
Aggregate Capacity	—	110.08 Mbps	110.08 Mbps
Receive Power	—	-78.83 dBm	-78.98 dBm
Frequency	5800 MHz	5800 MHz	5900 MHz
Required Capacity	100 Mbps	50 Mbps	50 Mbps
Bandwidth	<input checked="" type="checkbox"/> 10 MHz <input checked="" type="checkbox"/> 20 MHz <input checked="" type="checkbox"/> 30 MHz <input checked="" type="checkbox"/> 40 MHz <input checked="" type="checkbox"/> 50 MHz	<input checked="" type="checkbox"/> 10 MHz <input checked="" type="checkbox"/> 20 MHz <input checked="" type="checkbox"/> 30 MHz <input checked="" type="checkbox"/> 40 MHz <input checked="" type="checkbox"/> 50 MHz	<input checked="" type="checkbox"/> 10 MHz <input checked="" type="checkbox"/> 20 MHz <input checked="" type="checkbox"/> 30 MHz <input checked="" type="checkbox"/> 40 MHz <input checked="" type="checkbox"/> 50 MHz

Examples of airFiber5 Link Calculator

* If you do not see the airFiber5 Link Calculator, download the latest airFiber5 firmware at: downloads.ubnt.com/airfiber

Transmit Power Configuration

The AF-5 allows for a very high degree of flexibility in configuring transmit power, supported constellations, channel bandwidths, and duplexing modes. Because of the number of configuration options, refer to this guideline as you customize your AF-5 configuration:

Depending on the country or region, the AF-5 may be configured to support maximum transmit power as high as +50 dBm EIRP. Power levels in excess of approximately +43 dBm will start to affect the maximum supported constellation.

TX Power (dBm EIRP)	Supported Constellation
43	256QAM
45	64QAM
47	16QAM
50	QPSK

For example, if you have a relatively short-range link and you need to support a maximum constellation of 256QAM, then configure the AF-5 for less than +43 dBm EIRP.

To minimize interference, you should use the lowest practical power setting that supports the intended target constellation for a given distance. Looking at the sensitivity values for the given channel bandwidth, you should target a receive signal value approximately 3 to 6 dB higher than the sensitivity threshold.

	10 MHz	20 MHz	30 MHz	40 MHz	50 MHz
10x	-63 dBm	-60 dBm	-59 dBm	-58 dBm	-57 dBm
8x	-70 dBm	-67 dBm	-66 dBm	-65 dBm	-64 dBm
6x	-77 dBm	-74 dBm	-73 dBm	-72 dBm	-71 dBm
4x	-84 dBm	-81 dBm	-80 dBm	-79 dBm	-78 dBm
2x	-90 dBm	-87 dBm	-86 dBm	-85 dBm	-84 dBm
1x	-93 dBm	-90 dBm	-89 dBm	-88 dBm	-87 dBm
Ultimate	-95 dBm	-93 dBm	-93 dBm	-92 dBm	-91 dBm

To obtain the greatest range performance, you may want to explore power settings above +43 dBm since the longest-range links will be limited to the lower-order constellations. The best possible range will be achieved with a combination of maximum power level, narrowest channel bandwidth, lowest-order constellation, and TDD.

Power Balance Optimization for FDD

In the default state, the AF-5 has this configuration:

- TX power: +40 dBm (EIRP)
- Channel bandwidth: 10 MHz
- Duplexing mode: TDD

To optimize throughput with maximum frequency reuse:

1. Aim the AF-5 using the factory default settings and TDD.
2. Allow the AF-5 to automatically rate-adapt.
3. Configure the AF-5 for FDD operation.
4. Check the modulation rate and capacity indicators for asymmetry.
5. You may notice significant asymmetry. If you do, then this could be due to a poorly aimed AF-5 or an AF-5 that is operating in some sort of reflective Fresnel environment. Ensure that the AF-5 is correctly aimed and free of any potential reflections before proceeding to the next procedure.

To optimize both ends of the link for the best symmetry:

1. Test for a local desense condition (possibly due to a reflection or other disturbance). Begin with the AF-5 that is receiving the lowest RX capacity reading, and decrease the TX power on *that* AF-5 by 1 dB.
 - a. Check if there is any increase in the RX capacity at the AF-5.
 - b. Watch for decreases in the TX capacity of the AF-5.
2. Perform step 1 iteratively to find out if there is any RX capacity sensitivity to the local TX power level.
3. If this condition persists, try the following:
 - a. Run the lowest transmit power that still allows for the best balance of performance on both ends of the link.
 - b. Increase the FDD frequency separation and repeat the optimization process. (In general you should run the lowest power possible to meet the data rate requirements for the link.)

This link symmetry procedure should be repeated on the opposite end of the link to test for desense on the other side.

If desense is not an issue, then try this method to mitigate the asymmetry: Slightly increase the transmit power on the opposite end of the link. (Note: This should be tried only after you rule out local desense first.)

For the best possible FDD performance, use as much frequency separation as possible to minimize external coupling of energy.

Online Resources

Support: support.ubnt.com

Community: community.ubnt.com/airfiber

Downloads: downloads.ubnt.com/airfiber