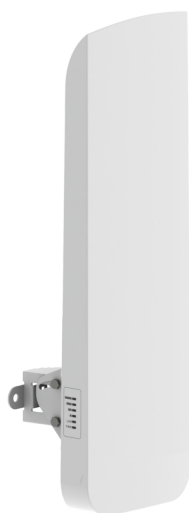


**GeoDesy FSO**

www.geodesy-fso.com

GEO40 - 2.4 - 5GHz

DATASHEET



Key features

- 20 dBi integrated panel antenna
- Full, half, and quarter bandwidth channels
- Compact weatherproof enclosure
- Industry standard interfaces
- Secure data transmission
- Quick installation and re-deployment
- Built-in automatic failover
- License free operation

Description

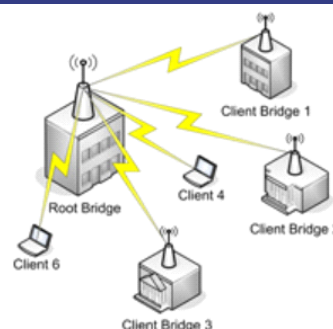
The GEO 40 delivers the highest performance and stability available in the 2.4- 5 GHz Base Station class. This product combines a robust IP-65 compliant enclosure with a highly advanced 802.11n radio core containing MIMO 2x2 technology along with an integrated high gain dual polarized 90° sector antenna. The device is powered by a reliable, advanced, and feature-rich operating system, allowing the creation of very high throughput and stable wireless networks quickly, safely, and effectively. In addition, the GEO 40 supports client operating mode which extends application scenarios, but

the main advantage of this model is a base station with a professional integrated antenna. The software engine allows the GEO 40 to work as AP, bridge or as a router, provides a user-friendly based GUI with instant changes, includes useful installation tools and also is compatible with Wireless Network Management System for one of the most advanced management tools.

.. And all this comes with a limited lifetime warranty...

Usage examples

PTMP Wireless GEO40 is an ideal device for point-to-multiple point applications as a medium to long range client device.



Product Distance Recommendation	PTMP Mode	PTP Mode	PTP Mode (Full Capacity)
Geo 40	7 km	N/A	N/A



Copyright © 2011 Geo-Wireless. All rights reserved. Geodesy, the Geo-Wireless logo, are trademarks of Geo-Wireless. All other company and product names may be trademarks of their respective companies. While every effort is made to ensure the information given is accurate, Geo-Wireless does not accept liability for any errors or mistakes which may arise. Specifications and other information in this document may be subject to change without notice.

www.4Gon.co.uk info@4gon.co.uk Tel: +44 (0)1245 808295 Fax: +44 (0)1245 808299



Wireless

WLAN standard	IEEE 802.11 a/b/g/n
Radio Mode	MIMO 2x2
Operating modes	Access point (auto WDS), Station, Station WDS, iPoll Access Point, iPoll Station
Radio frequency band	2.4 - 5 GHz
Transmit power	Up to 29 dBm (country dependent)
Receive sensitivity	Varying between -95 and -75 dBm depending on modulation
Channel size	20 - 40 MHz
Modulation schemes	802.11 a/n: OFDM (64-QAM, 16-QAM, QPSK, BPSK)
Data rates	802.11 n: 300, 270, 240, 180, 120, 90, 60, 30 Mbps 802.11 a: 54, 48, 36, 24, 18, 12, 9, 6 Mbps
Error correction	FEC, Selective ARQ, STBC
Duplexing scheme	Time division duplex

Antenna

Type	Integrated directional dual-polarized panel
Gain	20 dBi

Wired

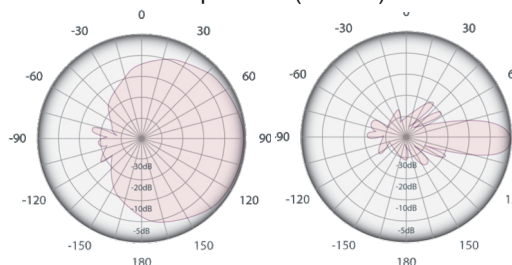
Interface	10/100 Base-T, RJ45
Built-in surge protection	Yes

Networking

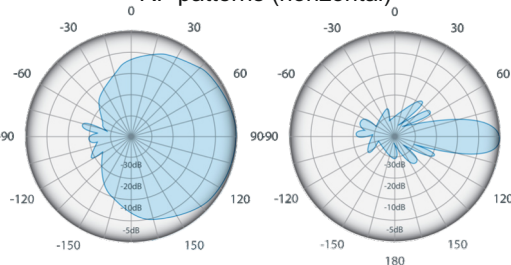
Operating modes	Bridge, Router
WAN	Static IP, DHCP client, PPPoE client
NAT	Routing w/ or w/o NAT
Static routing	Supported
DHCP	Client, Server, Relay
Port forwarding	Supported
VLAN	Supported for management and data

Antenna Specifications

RF patterns (vertical)



RF patterns (horizontal)



Frequency range	4.9 - 5.9 GHz
Gain	20 dBi
Polarization	Dual linear
Cross-pol Isolation	24 dBi
Max VSWR	1.7:1
H-pol Beamwidth	88 deg
V-pol Beamwidth	93 deg
Elevation Beamwidth	35 deg

Your distributor:

