

# i-MO 310 - Identification Guide

1 x i-MO Appliance



Optional: Up to 3 x external aerials  
Type A



Optional: Up to 3 x external aerials  
Type B  
Optional: Up to 3 x external aerial brackets



Optional - Up to 6 x SIM cards



1 x Mains AC Adapter and UK Mains Lead



Optional - 2 x WiFi antenna

# Quick Start Guide

The i-MO appliance is supplied fully configured and ready to use. This guide describes how to connect and get started with the device.

## 1) Attach WiFi antennas (optional)

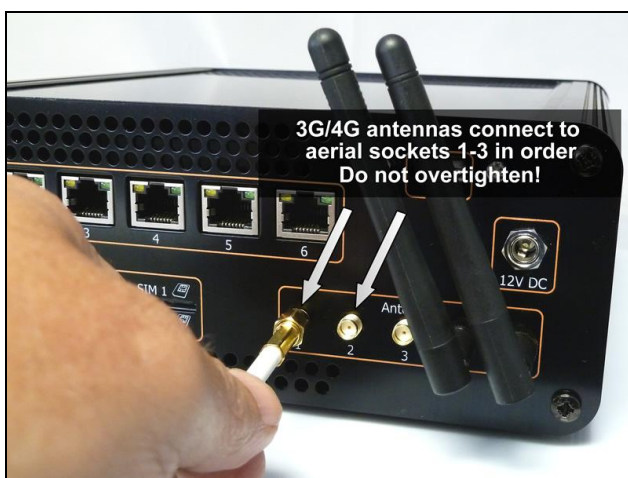
The i-MO appliance is supplied with a WiFi interface. This can be enabled on request at time of order. If the WiFi interface is enabled install the two antennas on the aerial connectors numbered 4 and 5 as shown below. Position these at an angle as shown below.



## 2) Attach 3G/4G antennas and cables

Up to 3 antennas may be provided dependent upon the number of modems installed. The antennas must be mounted outside and as high as possible. The antennas should be spaced at least 1 metre apart from each other.

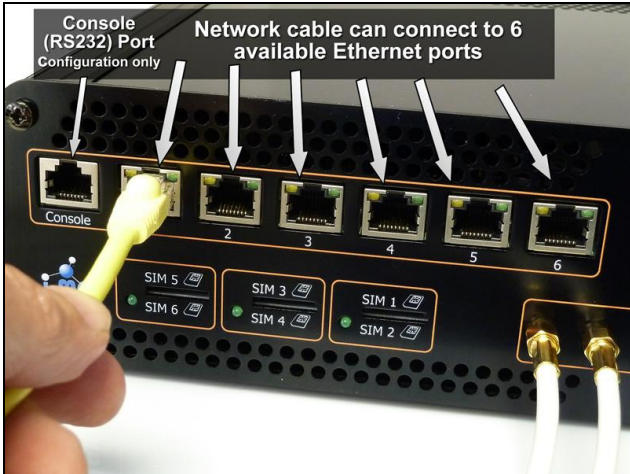
The connector on each aerial cable should be attached to the aerial sockets (1-3) as shown below. **Note: Connectors should be touch tight only! Do not over tighten.**



### 3) Attach network cables (optional)

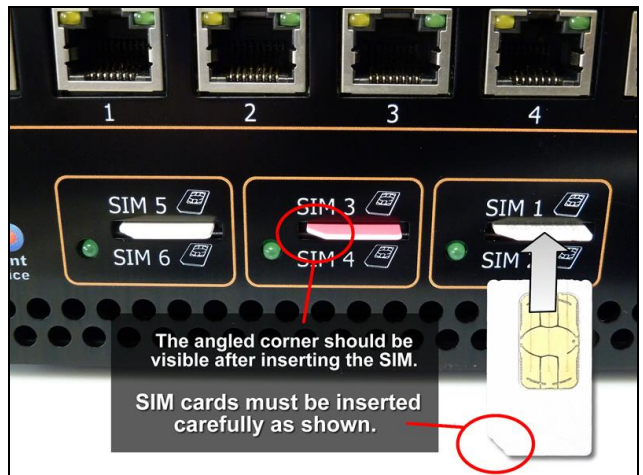
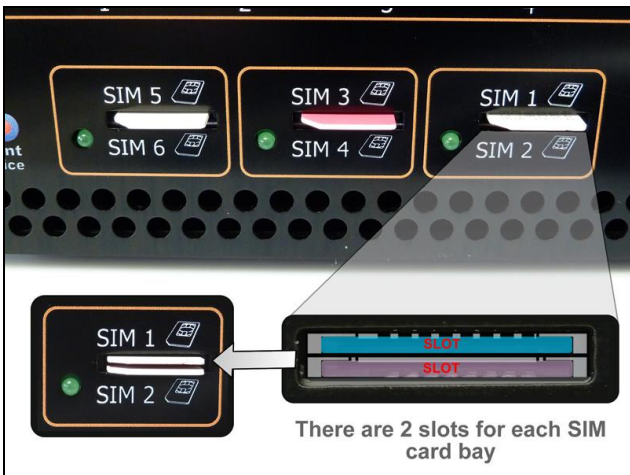
The i-MO appliance provides six Ethernet ports at the rear. Each of these can be individually configured as WAN or LAN ports. Network cables (not provided) can be connected as shown below. The default configuration is all ports configured for LAN usage (6 port network hub).

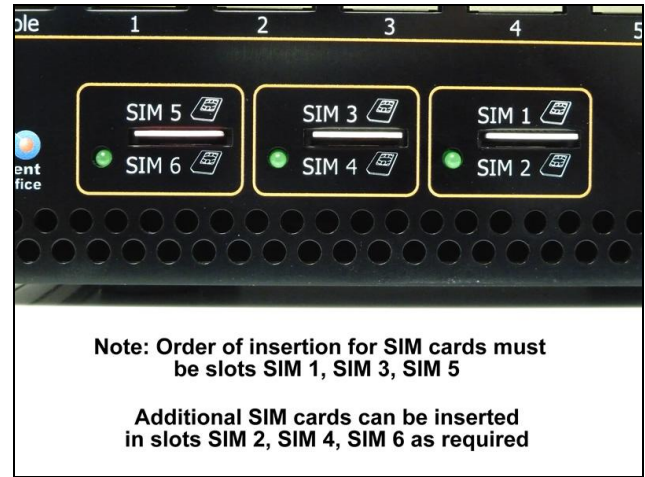
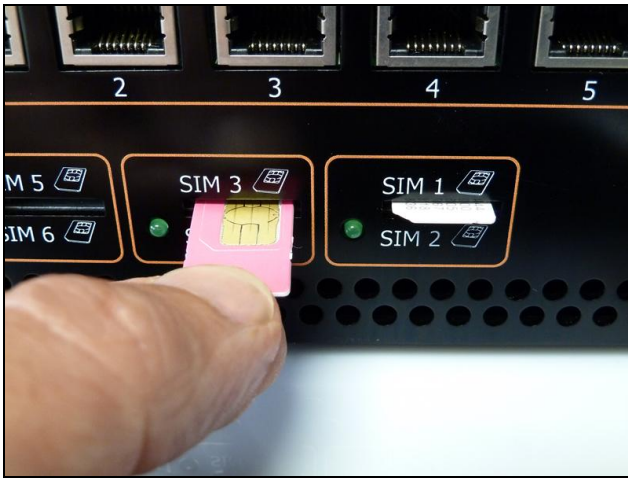
**Note:** The first port on the left as viewed from the rear is a Console (RS232) Port available for unit configuration purposes only. This port is **NOT** available for network use.



### 4) Install SIM cards

If SIM cards have been supplied to you with the i-MO unit, then they will already be installed. If you need to insert or replace SIM cards then these need to be installed in the SIM card slots on the rear of the appliance as illustrated below.





- Note – please ensure you insert the SIM cards carefully in their slots and ensure that they are pressed in as illustrated above
- **Note:** Up to six SIMs can be inserted - starting with slots SIM 1, SIM 3 and SIM 5

**Electronic Media Services Ltd**

Passfield Business Centre, Lynchborough Road, Liphook, Hampshire GU30 7SB  
Tel: 01428 751655 Fax: 01428 751654 e-mail: imo@ems-uk.com



## 5) Power cable

The appliance is powered by an AC Adapter power supply. Do **not** connect the power supply to the mains yet. Please insert the power cable as shown below. Now connect power supply to mains.

**Note:** We recommend the use of UPS units where power regulation cannot be guaranteed (e.g. use of a generator)



## 6) Power switch

The power switch at the front of the unit is used to turn the appliance on (boot) or off (shutdown). As soon as the button is pressed it will illuminate to show that the appliance is powering up. Press the button again to start the power off sequence. The message on the status display will change and when the power off sequence has completed the light in the button will extinguish.

**Note:** Do **NOT** hold the power button in unless specifically instructed to do so by a support engineer



### Electronic Media Services Ltd

Passfield Business Centre, Lynchborough Road, Liphook, Hampshire GU30 7SB  
Tel: 01428 751655 Fax: 01428 751654 e-mail: imo@ems-uk.com



## 7) Status display

The LCD display shows the status of up to three mobile connections plus the overall status of the link.

**Link Status** This shows the overall status of the link which can either be UP or DOWN. When the link is DOWN the appliance is not able to send or receive data.

Just to the right of the link status the letters T and R will flash when the appliance is Transmitting or Receiving data.

**Mobile Status** This shows the status of each mobile channel. The letter U will be displayed when the link is UP and D is displayed when the link is DOWN. The status will also flash T and R when the channel is transmitting or receiving data.

**Network** This shows the name of the network the appliance is using.

**Mode** The standard appliance currently supports five network protocols: GPRS, EDGE, 3G, HSDPA and HSPA+. The letter G is displayed for GPRS, E for EDGE, 3 for 3G and H for HSDPA or HSPA+ modes.

**Note:** If one or more 4G compatible modems are fitted then those channels will also support the 4G protocol. The digit 4 will then be displayed.

**Signal Strength** This shows the strength of the signal being received from the mobile network.

