

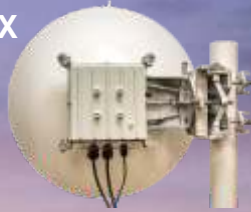
60 SX



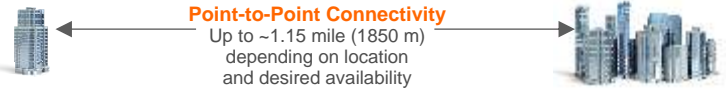
60 MX



60 LX



- Highest performance 60 GHz radio on the market.
- Choice of 3 high performance antennas.
- Advanced “Lens” antenna, superior to previous generation flat panel antennas.
- 2 Gbps aggregated LAN throughput (link capacity).
- Up to +55 dBm max EIRP, compared to competitors’ 42 dBm, provides higher reliability & longer distance.



Next Generation 60 GHz Point-to-Point Radios

LightPointe’s AireLink wireless bridges set a new benchmark in 60 GHz technology for building-to-building connectivity. Based on over two years of research and development, these backhaul radios are the most affordable, advanced 60 GHz radios available and include a choice of three antennas capable of the highest performance in the industry. Our innovative high gain Lens antenna is so advanced it “acts” like a much larger antenna, outperforming previous generation flat antennas.

Whether connecting two buildings in a business or school campus, or providing small cell backhaul in an architecturally sensitive historic district, these radios will provide years of reliable service while avoiding monthly leased line costs. And best of all, 60 GHz is license free in most countries—so your organization can install these radios quickly and without annual regulatory fees.

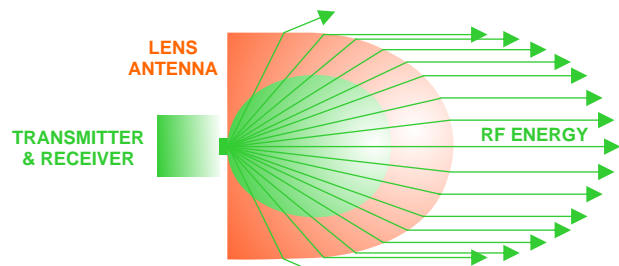


Enterprise & Carrier Applications

- Fiber-like long distance building connectivity for schools, businesses, government buildings and hospitals—without trenching/installing fiber or the recurring costs of leased-line alternatives.
- 4G/LTE macro and small cell mobile backhaul.
- Disaster recovery/emergency communications restoration.
- Digital video and video surveillance connectivity.
- Remote storage access.
- Local Area Network extension.
- Military theater of operations and base connectivity.

Advanced Features

- High speed full-duplex 1 Gbps connectivity (2 Gbps total aggregated LAN throughput/link capacity).
- Flexible connections, PoE, and helpful LED indicators.
- Unparalleled ease of installation, alignment, & operation.
- Compact & aesthetic design for sensitive installations.
- Innovative small footprint ultra high gain Lens Antenna with the industry’s best in class side lobe suppression & superior performance when compared to flat panel antennas (AireLink 60 SX) .



Industry-leading
2-year warranty



AireLink 60 SX

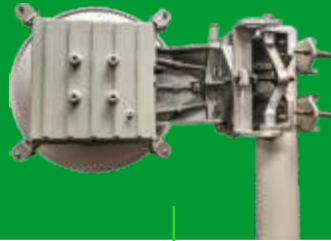
(4.72" / 12cm Lens Antenna)



Up to ~1/2 mile (800 m)

AireLink 60 MX

(1' foot / 30cm Antenna)



Up to ~1 mile (1600 m)

AireLink 60 LX

(2' foot / 60cm Antenna)



Up to ~1.15 mile (1850 m)

Link adaptation	9 level Hitless Automatic Coding & Modulation (ACM)	9 level Hitless Automatic Coding & Modulation (ACM)	9 level Hitless Automatic Coding & Modulation (ACM)
Modulation rates	1 Gbps (16QAM -5/8) 834 Mbps (16QAM -1/2) 704 Mbps (QPSK -13/16) 653 Mbps (QPSK -3/4) 559 Mbps (QPSK -5/8) 456 Mbps (QPSK -1/2) 350 Mbps (BPSK -3/4) 295 Mbps (BPSK -5/8) 239 Mbps (BPSK -1/2)	1 Gbps (16QAM -5/8) 834 Mbps (16QAM -1/2) 704 Mbps (QPSK -13/16) 653 Mbps (QPSK -3/4) 559 Mbps (QPSK -5/8) 456 Mbps (QPSK -1/2) 350 Mbps (BPSK -3/4) 295 Mbps (BPSK -5/8) 239 Mbps (BPSK -1/2)	1 Gbps (16QAM -5/8) 834 Mbps (16QAM -1/2) 704 Mbps (QPSK -13/16) 653 Mbps (QPSK -3/4) 559 Mbps (QPSK -5/8) 456 Mbps (QPSK -1/2) 350 Mbps (BPSK -3/4) 295 Mbps (BPSK -5/8) 239 Mbps (BPSK -1/2)
System latency	< 40 μ s + (distance in meters/300)	< 40 μ s + (distance in meters/300)	< 40 μ s + (distance in meters/300)
Max frame size	Jumbo frames up to 10K	Jumbo frames up to 10K	Jumbo frames up to 10K
Bit error rate	<10 ⁻¹⁰	<10 ⁻¹⁰	<10 ⁻¹⁰
Status indicators	Networking Port Status/Activity, RF ON, RF sync, Align mode, Power	Networking Port Status/Activity, RF ON, RF sync, Align mode, Power	Networking Port Status/Activity, RF ON, RF sync, Align mode, Power
Data network interfaces	RJ-45 (100/1000 Base TX) MM/SM Fiber SFP (1000Base-SX/LX)	RJ-45 (100/1000 Base TX) MM/SM Fiber SFP (1000Base-SX/LX)	RJ-45 (100/1000 Base TX) MM/SM Fiber SFP (1000Base-SX/LX)
Management interfaces	RJ-45 (10/100 Base TX) , RS232 Console port (micro USB)	RJ-45 (10/100 Base TX) , RS232 Console port (micro USB)	RJ-45 (10/100 Base TX) , RS232 Console port (micro USB)
RSSI alignment port	External IP67 connector	External IP67 connector	External IP67 connector
Management	Web based management platform/GUI, Command Line Interface (CLI) via TELNET, SNMP V1/2c	Web based management platform/GUI, Command Line Interface (CLI) via TELNET, SNMP V1/2c	Web based management platform/GUI, Command Line Interface (CLI) via TELNET, SNMP V1/2c
Antenna type	Lens (integrated)	Cassegrain (external)	Cassegrain (external)
RF spectrum	59 -63 GHz	59 -63 GHz	59 -63 GHz
Transmission power	+8 dBm (max.)	+8 dBm (max.)	+8 dBm (max.)
Max EIRP	44dBm	50dBm	55dBm
Antenna size	12cm	30cm	60cm
Antenna gain	36 dBi	42 dBi	47 dBi
Polarization	Horizontal/Vertical	Horizontal/Vertical	Horizontal/Vertical
Beam width	2.5°	1.1°	0.6°
Power options & protection	PoE+ (IEEE 802.3at) or Direct 48 (36...57) Vdc; Reverse polarization protection; Optional back-to-back power redundancy	PoE+ (IEEE 802.3at) or Direct 48 (36...57) Vdc; Reverse polarization protection; Optional back-to-back power redundancy	PoE+ (IEEE 802.3at) or Direct 48 (36...57) Vdc; Reverse polarization protection; Optional back-to-back power redundancy
Power consumption	25 Watts max	25 Watts max	25 Watts max
Operating temperature	-35°C to +50°C (-31 F to +122 F)	-35°C to +50°C (-31 F to +122 F)	-35°C to +50°C (-31 F to +122 F)
Water & dust rating	IP66	IP66	IP66
Humidity	95%, non condensing	95%, non condensing	95%, non condensing
Size	(220x220x70)mm (enclosure w/o ant & mount bracket)	(220x220x70)mm (enclosure w/o ant & mount bracket)	(220x220x70)mm (enclosure w/o ant & mount bracket)
Weight	4kg (Total. Incl. mount)	6.35kg (Total. Incl. mount)	9.07kg (Total. Incl. mount)

LightPointe
11696 Sorrento Valley Road, #101
San Diego, CA 92121 • USA
+1 858-834-4083
www.LightPointe.com

USA: FCC Part 15; ETSI/CEPT: EN302-217-3 V1.3.1; EN302-217-4-2 V1.5.1; EN301-489, EN609-1; EN61000-3; EN61000-4; ECC/REC(09)01; Germany: Amtsblatt SSB FE-OE 034, Not. #2012/0245/D; Austria: FSB RR072; Switzerland: RIR0302-46; Australia: LID Class License 2000, schedule 1, item 51; CE Mark, ROHS

© 2015 LightPointe Communications, Inc. All rights reserved. LightPointe, the LightPointe logo, & AireLink are registered trademarks of LightPointe. Specs & information are subject to change without notice. Registration required for 2 year warranty. V031715a

4Gon www.4Gon.co.uk info@4gon.co.uk Tel: +44 (0)1245 808295 Fax: +44 (0)1245 808299