

# MAX BR1 Slim

## Compact and Rugged Mi-Fi

**PEPWAVE**  
Broadband Possibilities



The MAX BR1 Slim is compact (1.1 x 3.8 x 4.8 inches) and tough enough to install just about anywhere, and it offers advanced features such as GPS fleet tracking, remote management, and USB or terminal block power capability.



### Redundant SIM Slots for Multiple Carriers

Redundant SIM slots with automatic switching for reliable network. You can also set the MAX BR1 Slim to automatically switch SIM cards when you're in danger of exceeding a data cap. It also allows you travel across borders without changing SIM cards manually.



### Dual Micro USB Power Input

Connect one of the two built-in 5V micro USB ports to a 10000mAh power bank for up to 7 hours of operation. Running low on power? Connect a second power bank before disconnecting the first for uninterrupted networking.

### SpeedFusion



### SpeedFusion Hot Failover.

The MAX BR1 Slim automatically re-establishes your IPsec VPN connection on lower priority link when your primary WAN fails. Your VPN stays up, and you stay seamlessly connected.



### Fleet Tracking and Management

Track and manage your fleet from anywhere. With built-in GPS fleet tracking and InControl 2 cloud-based management, you can keep tabs on location and manage your mobile network from any Internet-connected device.



### Customize Captive Portal

Branding your captive portal is as easy as uploading your logo and terms & conditions. You can easily set bandwidth allowance and access duration per user or manage access using RADIUS or LDAP servers.



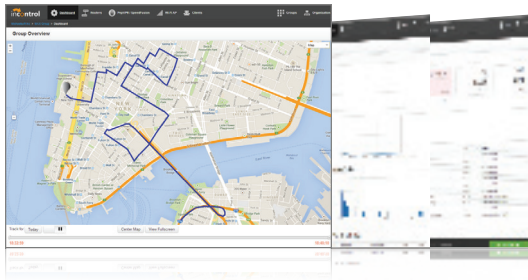
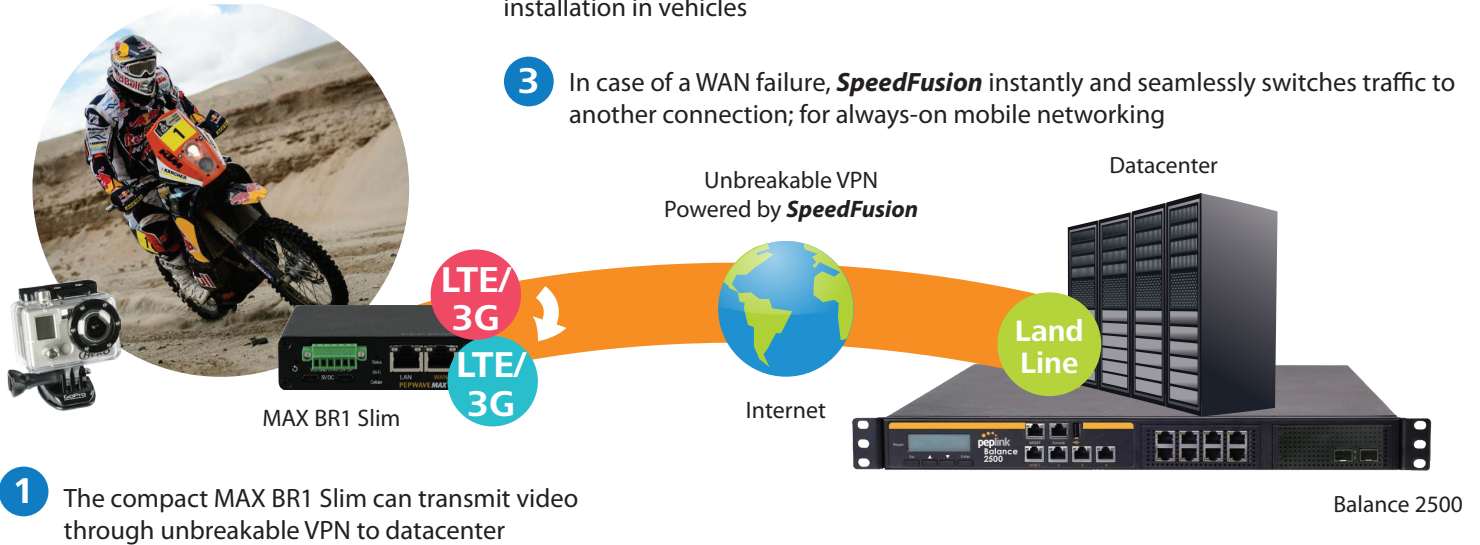
### Ultra-Portable LTE Connectivity

The MAX BR1 Slim gives you full-featured Mi-Fi in a package that measures just 1.1 x 3.8 x 4.8 inches. Its rugged metal enclosure stands up to moisture, dust, and vibration. It gives you and your devices, such as surveillance camera, LTE connectivity anywhere.

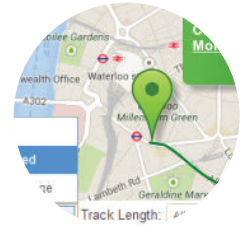
## Applications

### Motorcycle – Check Vehicle Speed and Location

- 1 The compact MAX BR1 Slim can transmit video through unbreakable VPN to datacenter
- 2 The MAX BR1 Slim is equipped with a terminal block for secure power installation in vehicles
- 3 In case of a WAN failure, **SpeedFusion** instantly and seamlessly switches traffic to another connection; for always-on mobile networking



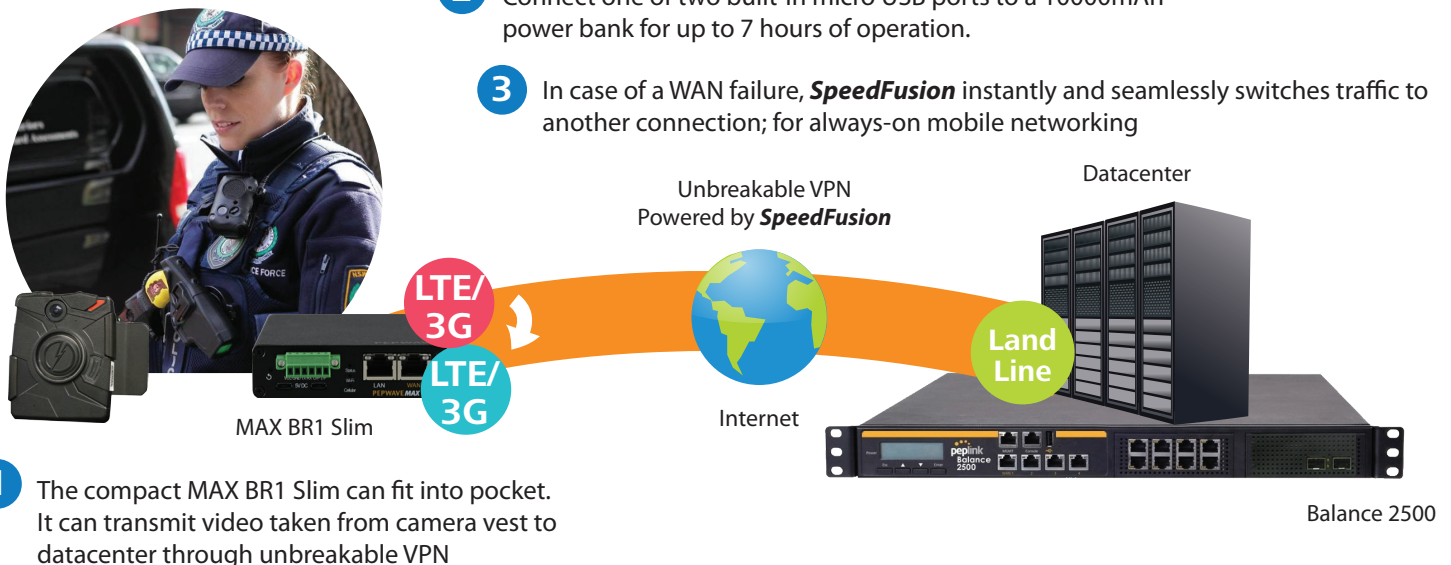
**InControl<sup>2</sup>**  
Setup. Manage. Report.



- 4 InControl 2 provides complete cloud-based device management, monitoring, and reporting and let you check vehicle speed, view cellular coverage, and play back route histories in real-time

### Camera Vest – Unbreakable Video Streaming

- 2 Connect one of two built-in micro USB ports to a 10000mAh power bank for up to 7 hours of operation.
- 3 In case of a WAN failure, **SpeedFusion** instantly and seamlessly switches traffic to another connection; for always-on mobile networking

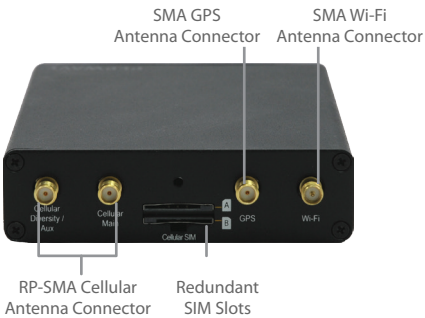
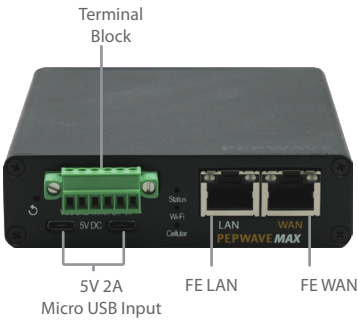
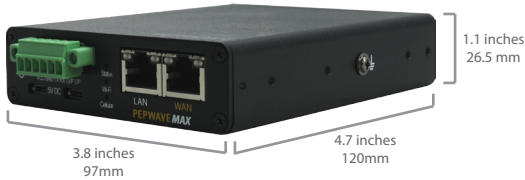


- 1 The compact MAX BR1 Slim can fit into pocket. It can transmit video taken from camera vest to datacenter through unbreakable VPN

# Specifications

MAX BR1 Slim	
WAN Interface	1x FE Embedded LTE Modem with Redundant SIM Slot
LAN Interface	1x FE
Wi-Fi Interface	802.11b/g/n 150Mbps Wi-Fi WAN or AP
Router Throughput	100Mbps
Cellular and GPS Antenna Connector	2x RP-SMA Cellular Antenna Connector 1x SMA GPS Antenna Connector 1x SMA Wi-Fi Antenna Connector
Power Input	Micro USB 5V 2A
Power Consumption	12W (max.)
Dimensions	1.1 x 3.8 x 4.8 inches 26x x 97 x 120 mm
Weight	0.8 pound 350 grams
Operating Temperature	-40° – 149°F -40° – 65°C
Humidity	15% – 95% (non-condensing)
Certifications	FCC, CE, RoHS, E-Mark EN 50155: Railway Applications - Electronic Equipment used on Rolling Stock

Warranty 1-Year Limited Warranty



## Product Ordering Information

Product Code	Carrier	Embedded Modem	4G Bands/Frequencies (MHz)	3G Bands/Frequencies (MHz)
MAX-BR1-SLIM-LTE-E-T	4G LTE/HSPA+	1	4G LTE: B1/2100, B3/1800, B7/2600, B8/900, B20/800	WCDMA/HSDPA/HSUPA/HSPA+/DC-HSPA+: B1/2100, B2/1900, B5/850, B6/800, B8/900

## Features

- WAN**  
Support for PPPoE, Static IP, DHCP  
WAN Link Health Check  
Bandwidth Allowance Monitor  
Support for Dynamic DNS services  
WAN Port Convertible into LAN Port
- LAN**  
DHCP Server for LAN Clients  
Extended DHCP Options  
DHCP Reservation  
DNS Proxy for LAN Clients  
VLAN on LAN Support
- Security**  
Stateful Firewall  
DoS Prevention  
Web Blocking
- Complete VPN Solution**

- PepVPN / SpeedFusion Hot Failover  
Site-to-Site VPN  
Hot Failover  
256-bit AES Encryption  
Pre-shared Key Authentication  
Dynamic Routing  
X.509 Certificate Support  
IPsec VPN (Network-to-Network)
- Networking**  
NAT and IP Forwarding  
Static Routes  
Port Forwarding  
Many to One, One to One NAT  
NAT Pool  
SIP ALG, H.323 ALG  
UPnP, NAT-PMP

- Advanced QoS**  
User Groups  
Individual Bandwidth Limit  
Application Prioritization  
SIP, HTTPS, VPN QoS  
Custom Application QoS
- Device Management**  
Web Administrative Interface  
Command Line Interface  
InControl 2 Cloud Management  
Router Utility Mobile App  
Email Notification  
Active Client & Session Lists  
Bandwidth Usage Statistics  
Web Reporting Services  
Syslog Service  
SNMP v1, v2c and v3

- Global Positioning System**  
Integrated GPS  
Device Location Map  
Location Tracking Data  
Fleet Management with InControl 2
- Package Content**  
MAX BR1 Slim  
1x 5dBi Wi-Fi Antenna  
1x GPS Antenna  
2x 2dBi 4G LTE Antennas (4G LTE)

^ Feature is available as an upgrade