



## PSS-120

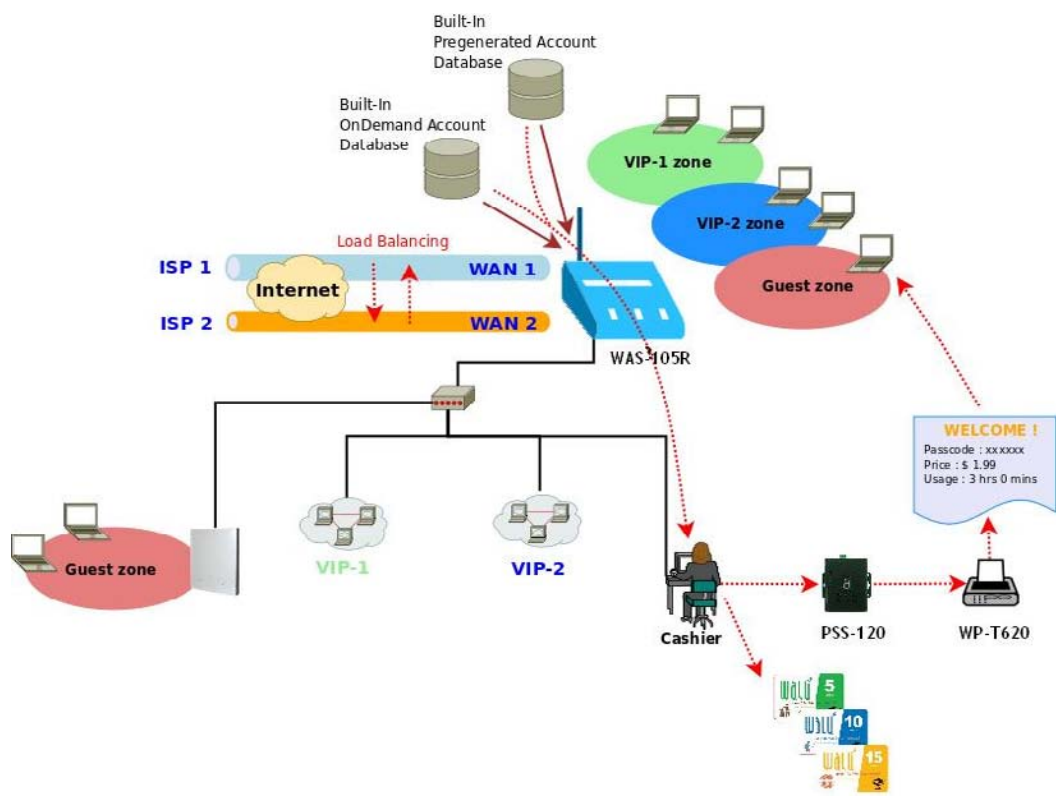
Intelligent Device Server, W/ 2 x DB-9M (Male) + 1 x 10/100M Ethernet

With the growth of the Internet age and ever increasing demand for wireless Internet access in public locations ranging from places such as airports, hotels, conventions, stadiums, restaurants or coffee shops, this has revolutionized the Hotspot application and becoming more and more apparent in our daily lives.

WAS-105R Wireless Hotspot Gateway provides the perfect opportunity to generate added revenue for your business and ensuring quality of service for customers within a secured network and prevent unwelcomed users to access the Internet. The hotspot on-demand ticket billing kits containing PSS-120 Network Device Server to work with WP-T610 Line Thermal Printer to provides instant ticketing for users and comes with two COM ports for redundancy where two Line Thermal Printers can be attached at the same time. The hotspot on-demand billing kit is designed with ease of use for account generation via PSS-120 Network Device Server from the built-in On-Demand billing plan from WAS-105R Wireless Hotspot Gateway and then prints the account ticket via WP-T610 Line Thermal Printer.

The hotspot on-demand ticket billing kits is easy to installation and setup where the Line Thermal Printer connects directly to PSS-120 Network Device Server with serial port (RS-232) COM1 and COM2 (for redundancy) and standard TCP/IP (RJ45) interface to connect to WAS-105R Wireless Hotspot Gateway. It is simple to operate with just a few clicks on the PSS-120 Network Device Server and out comes the ticket from the Line Thermal Printer.

# APPLICATION



## Features

- 1.Baud rate : 9600Kbps
- 2.Printing Speed : 60 mm/s
- 3.Web Management

## Specification

Intelligent Device Server	
Interface	2 x RS-232 DB-9M Ports (COM1: 1200 to 921600 bps, COM2: 9600 bps) 1 x 10/100 Ethernet Port
Management	Web management
Power Supply	DC Jack: 110 – 220V AC Power; 12 VDC, 1.A input. Screw Terminal Block : 12-60 VDC
Dimensions	116 mm (L) x 123 mm (W) x 27 mm (H), 300g