



## WAS-105R

IEEE802.11n Wireless Hot Spot Gateway Kit with On-demand and Pre-set concept 3A (Authentication, Authorization, Accounting)

802.11n 2T2R MIMO

Authentication

/ Authorization

/ Accounting

IEEE802.3af POE

Load Balance / Fail Over

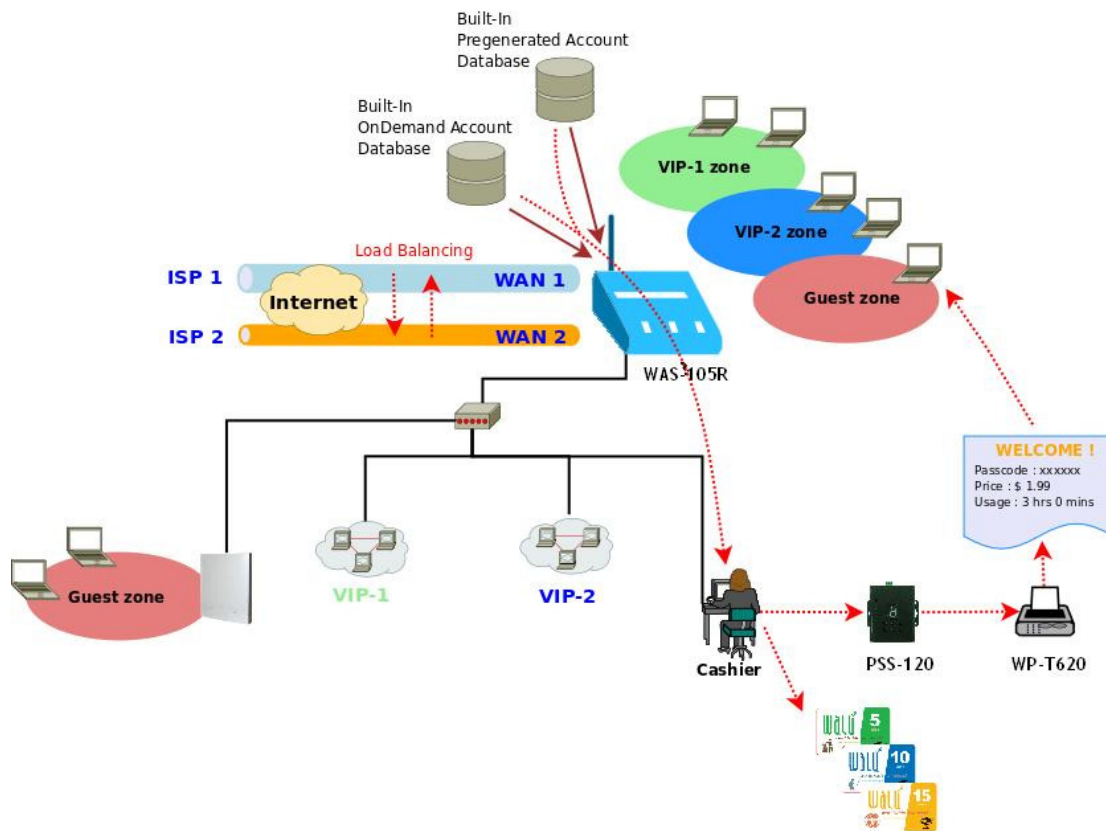
Bandwidth Management  
QoS

PheeNet WAS-105R is a Wireless Hotspot Gateway Kit, which compliance with IEEE802.11 standard, and provide data rate up to 300 Mbps.

WAS-105R applies to public access network such as Wireless Hotspot, network management for guest access, hospitality deployments – which require reliability, efficiency, and security. WAS-105 combines an IP Router /Firewall, Multi-WAN /QoS enforcement and Access Controller for use in wireless hotspot environments. One single WAS-105R can serve up to 100 simultaneous users, takes control over authentication, authorization, accounting and routing to the Internet as well as to the operating central. Built-in AAA system allows hotspot owners set up public access services without extra RADIUS server.

With PheeNet WAS-105R, it provides additional sources of revenues for a better Return on Investment (ROI). Your business or organization can provide customers or guests wireless Internet connection with zero configuration and bandwidth management while protecting your private network.

# APPLICATION



## Features

### User Management

- Support 100 simultaneous authentication users
- Max 3069 Accounts
- Support Pre-setting authentication users, On-Demand Users and Local Radius Accounts.
- Users Session Management
- Configurable user Black list ( with Time-based control)
- Allows MAC address and user identity binding for local user authentication
- SSL protected login portal page
- Supports multiple login with one single account
- Session idle timer
- Login Session idle time out setting
- Session and account expiration control
- Notification email to provide a hyperlink to login portal page
- User Log and traffic statistic notification via automatically email service

- Login time frame control
- Session limit
- Real-Time Online Users Traffic Statistic Reporting
- Support local account roaming
- Seamless Mobility : User-centric networking manages wired and wireless users as they roam between ports or wireless APs

## Authentication

- Authentication: single sign-on (SSO) client with authentication integrated into the local authentication environment through local/domain, LDAP, RADIUS, MAC authentication, and 802.1x
  - ◆ Customizable Login and Logout Portal Pages
  - ◆ Customizable Advertisement Links on Login Portal Page
- User authentication with UAM (Universal Access Method), 802.1x /EAPoLAN ,MAC address
- Allow MAC address and users identity binding for local user authentication
- No. Of Registered RADIUS Servers : 2
- Support MAC control list (ACL )
- Support auto-expired guest accounts
- Users can be divided into user groups
- Each Service Domain has its own network properties and bandwidth control
- Max simultaneous user session (TCP/UDP) limit
- Configurable user black list
- Export/Import local users list to/from a text file
- Web-based Captive Portal for SSL browser-based authentication
- Authentication Type
  - ◆ IEEE802.1X(EAP,LEAP,EAP-TLS,EAP-TTLS,EAP-GTC,EAP-MD5)
  - ◆ RFC2865 RADIUS Authentication
  - ◆ RFC3579 RADIUS Support for EAP
  - ◆ RFC3748 Extensible Authentication Protocol
  - ◆ MAC Address authentication
  - ◆ Web-based captive portal authentication

## Authorization

- Authorization : access control to network resource such as protected network with intranet, internet, bandwidth, VPN, and full stateful packet firewall releases

## Accounting :

- Provides billing plans for pre-setting accounts
- Provides billing plans for on-demand accounts
- Enables session expiration control for On-demand accounts by time(Hours) and volume
- Detailed per-user traffic history based on time and data volume for both local and on-demand accounts

- Support local on-demand and external RADIUS server
- Contain 10 configurable billing plans for on-demand accounts
- Support credit card billing system by Authorize.net and PayPal
- Provide session expiration control for on-demand accounts
- Support automatic email network traffic history

## Wireless

- Transmission power control : 7 Levels
- Channel selection : Manual or Auto
- No. of associated clients per AP : 32
- Setting for max no associated clients : Yes
- No. of BSSID (Virtual AP) : 8
- No. of Max. WDS setting : 4 (8)
- Preamble setting : Short / Long
- Setting for 802.11b/g/n mix, 802.11b only or 802.11 g only or 802.11n only
- Setting for transmission speed
- IEEE802.11f IAPP ( Inter Access Point Protocol ) , hand over users to another AP
- IEEE802.11i Preauth (PMSKA Cache)
- IEEE802.11d Multi country roaming
- Automatic channel assignment
- Secure wireless bridge connects access points without wire
- Monitoring and reporting
- IP-Based monitoring of network devices
- TX Power Control
- Auto channel selection by hardware push button

## Security

- Layer 2 User Isolation
- Blocks client to client discovery within a specified VLAN
- Setting for TKIP/CCMP/AES key's refreshing periodically
- Hidden ESSID support
- Setting for “ Deny Any “ connection request
- MAC Address Filtering (MAC ACL)
- Support Data Encryption : WEP(64/128-bit), WAP, WAP2
- Support various authentication methods : WPA-PSK,WPA-RADIUS,IEEE802.1X
- Support VPN pass-through
- Encryption Type
  - ◆ WEP: 64 and 128 bit
  - ◆ WAP-TKIP , WPA-PSK –TKIP, WPA-AES, WPS-PSK-AES
  - ◆ WAP2/802.11i :WPA2-AES, WAP2-PSK-AES, WAP2-TKIP, WPA-PSK-TKIP
  - ◆ Secure Socket Layer (SSL ) and TLS : RC4 128-bit and RSA1024-bit and 2048-bit

## ISP Domain

- The network is divided into maximum 8 group, each defined by a pair of VLAN tag and ESSID
- Each Domain has its own (1) login portal page (2) authentication options (3) LAN/ VLAN interface IP address range (4) Session number limit control (5) Traffic shaping
- Support VLAN Tag over WDS

## Dual WAN

- Load Balancing
  - ◆ Outbound Fault Tolerance
  - ◆ Outbound loadbalance
  - ◆ Multiple Domain Support
  - ◆ By Traffic
- Bandwidth Management by individual and users group
- WAN Connection Detection

## QoS Enforcement=

- Packet classification via DSCP (Differentiated Services code Point )
- Traffic Analysis and Statistics
- Diff/TOS
- IEEE 802.1Q Tag VLAN priority control
- IEEE 802.11e WMM
- Automatic mapping of WMM priorities to 802.1p and IP DSCP
- U-APSD(Unscheduled Automatic Power Save Delivery)
- IGMP Snooping for efficient multicast delivery
- Upload and Download Traffic Management
- Support WMM Multiple Priority Level
- Scheduled Policies

## Network

- Support static IP , Dynamic IP(DHCP Client ), PPPoE and PPTP on WAN connection
- DHCP Server Per VLAN; Multiple DHCP Networks
- 802.3 Bridging
- Proxy DNS/Dynamic DNS
- Support NAT
  - ◆ IP/Port destination redirection
  - ◆ DMZ server mapping
  - ◆ Virtual server mapping
  - ◆ H.323, SIP, PPTP pass-through
- Built-in with DHCP server
- NTP Client
- Virtual DMZ

- Virtual Server (IP /Port Forwarding)
- Binding VLAN with Ethernet and Wireless interface
- Support MAC Filter
- Support IP Filter
- Time-based AP access control
- Support Walled garden (free surfing zone)
- Support MAC address and IP address pass through

## System Administration

- Intuitive Web Management Interface
- Two administrator accounts
- Provide customizable login and logout portal page
- CLI access (Remote Management) via Telnet and SSH
- Remote firmware upgrade (via Web)
- Utilities to backup and restore the system configuration
- Remote Link Test – Display connect statistics
- Full Statistics and Status Reporting
- Real time traffic monitor
- Ping Watchdog
- Traffic history report via email to administrator
- Users' session log can be sent by email
- Even Syslog
- Remote Syslog reporting to external server
- SNMP v1,v2c ,v3
- SNMP Traps to a list of IP Address
- Support MIB-II
- Spanning Tree Protocol
- NTP Time Synchronization
- Administrative Access : HTTP / HTTPS

## Specification

Wireless Features	
Standard	IEEE 802.11b, g, n IEEE 802.3u 100Base-TX Fast Ethernet IEEE 802.11d IEEE 802.11h
Security	64 and 128 bit WEP WAP-TKIP , WPA-PSK –TKIP, WPA-AES, WPS-PSK-AES WAP2/802.11i :WPA2-AES, WAP2-PSK-AES, WAP2-TKIP, WPA-PSK-TKIP MAC Address Filter User Isolation- Hidden ESSID

Frequency Band	2.4GHz
Modulation	IEEE802.11b : DSSS (DBPK,DQPSK,CCK) IEEE802.11g/n : OFDM(64-QAM,16-QAM,QPSK,BPSK)
Receive Sensitivity	802.11b/g /n -90dBm@1Mbps, -86dBm@6Mbps,-84dBm@11Mbps,-69dBm@54Mbps
Output Power	100mW
Transmit Output Power Control	7 levels
Channel	802.11b/g/n : 11 for FCC,14 for Japan,13 for Europe, 2 for Spain, 4 for France
Antenna	2 x 5dBi Omni Antenna (Reverse SMA connector)

Hardware	
Base Platform	AR7240+AR9283
CPU Clock Speed	400 MHz
Flash	8MB
SDRAM	32MB
Interface	1 x DB9 Serial Port 1 x USB Port (Optional 3G interface radio with major brands – ODM only) 3 x 10/100BASE-TX auto-negotiation Ethernet port (RJ-45 connector) WAN * 2, LAN * 1 Auto MDI/MDI-X enabled , IEEE802.3af Power Over Ethernet Compatible , Auto Fail over
RF Channel Scan	Hardware Push-button to scan for a better channel to use
LED	1x Power, 2 x WAN ,1x LAN , 1x Status, 1x Busy, 1x Printer
Environment	Operating Temperature: -20 °C ~ 50 °C Storage Temperature: -20 °C ~ 60 °C Opeaating Humidity: 10~80%(non condensing) Storage Humidity: 5~90%(non condensing)
Power Supply	110 – 220V AC Power ; 12 VDC, 1.5A input. Support 802.3af Compliant , Power Over Ethernet (48V/0.3 A)
Mounting	Wall Mountable , Metal case compliant with IP50 standard
Dimensions	205 mm (L) x 125 mm (W) x 35mm (H), 600g
Certificate	FCC,CE, IP50,ROHS compliant