



## data sheet

### BENEFITS

#### Wire-like throughput over the air

Based on the 802.11ac standard, the ZoneFlex P300 supports RF capacity up to 867 Mbps. With Ruckus' purpose-built directional antenna, the ZoneFlex P300 supports throughputs up to 500 Mbps and offers performance up to 100 Mbps at 8 km (LoS).\*

\* When used with optional external antenna

#### Easy installation and pairing

ZoneFlex P300 enables installers to deploy wireless bridges effortlessly. Lightweight and designed with simple and flexible mounting options.

#### Simple positioning and aiming

Precision aiming and optimized performance with 30-degree beamwidth antenna and sophisticated LED-based aiming software. ZoneFlex P300 proactively finds and selects the best performing channel automatically using Ruckus' patented ChannelFly channel selection algorithms.

#### Secure and scalable

The wireless bridge link is AES secure and can scale to support multiple networks segmented by VLANs.

#### 10X scalability with wireless multi-node bridging

Each root bridge capable of supporting up to 10 receiving bridges.

#### Unmatched ROI

The wireless link offers much higher data throughput rates than T1/E1 or xDSL lines at only a fraction of the fixed line installation cost and without the recurring leased line cost. The ZoneFlex P300 is also an ideal option for backhauling small cell cellular networks.

#### Environmentally-friendly design

The internal dual polarized antenna not only does away the need for installing an external antenna, further simplifying the installation procedure, but also offers an aesthetically pleasing look and feel.

## ZoneFlex P300

### SMART 802.11AC 5GHZ OUTDOOR POINT-TO-POINT, POINT-TO-MULTIPOINT WIRELESS BRIDGE

#### High Performance 802.11ac 5GHz Outdoor Wireless Bridge

The Ruckus ZoneFlex P300 is an outdoor point-to-point and point-to-multi point bridge that unleashes the promise of 5GHz 802.11ac, delivering unparalleled throughput. Backhaul throughput of over 500 Mbps opens opportunities to new business models, bridging remote locations and providing broadband services to locations not reachable before, in an affordable way.

Designed for harsh outdoor conditions, the Ruckus ZoneFlex P300 is perfect for service providers looking to easily extend branded broadband services, backhaul small cell networks, offload data traffic from small cell networks, deploy multimedia hotspots, or offer wireless broadband services where fixed line access is limited.

The ZoneFlex P300 is also ideal for hotels, schools, warehouses and other enterprises looking to extend managed wireless LANs (WLANs) across remote buildings and where Ethernet cabling is not possible.

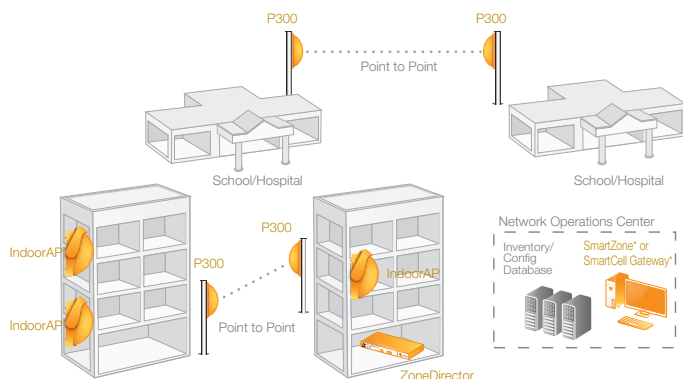
Auto-pairing of wireless bridges, in addition to flexible mounting options, forgiving antenna pattern, and an easy-to-use aiming software, allows installers to deploy and optimize a wireless link in a short time, significantly increasing productivity and reducing deployment costs.

# ZoneFlex P300

SMART 802.11AC 5GHZ OUTDOOR POINT-TO-POINT,  
POINT-TO-MULTIPOINT WIRELESS BRIDGE

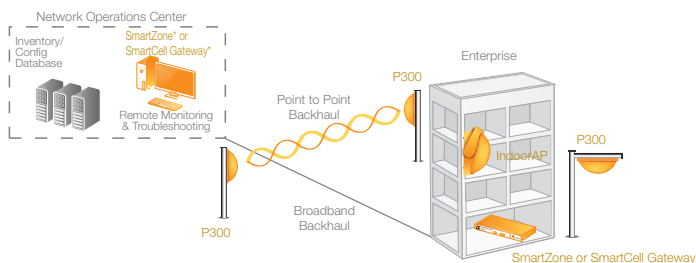
## BUILDING TO BUILDING BRIDGING

ZoneFlex P300 provides an ideal solution for linking two LANs in different buildings.



## BACKUP LINK FOR DISASTER RECOVERY

ZoneFlex P300 serves as a high performance back up link for enterprise disaster recovery



## FEATURES

- 802.11ac Point to Point or Point to Multi Point Bridge
- 5GHz operation
- 20MHz, 40MHz, and/or 80MHz channelization
- 14dBi internal directional antenna
- 2 external N-Type antenna connectors
- 802.3af Power over Ethernet
- Ruggedized for outdoor conditions: -40°C to 65°C operating temperature, IP67 rated
- Maximum link distance 12 km (using internal antenna)
- Dedicated radar avoidance pre scan (DFS)
- PD-MRC for reliable bridge connections
- Simple installation with mounting brackets included
- Automatic pairing and easy aiming between bridges
- Optional accessories available to enhance range & performance

# ZoneFlex P300

SMART 802.11AC 5GHZ OUTDOOR POINT-TO-POINT,  
POINT-TO-MULTIPOINT WIRELESS BRIDGE

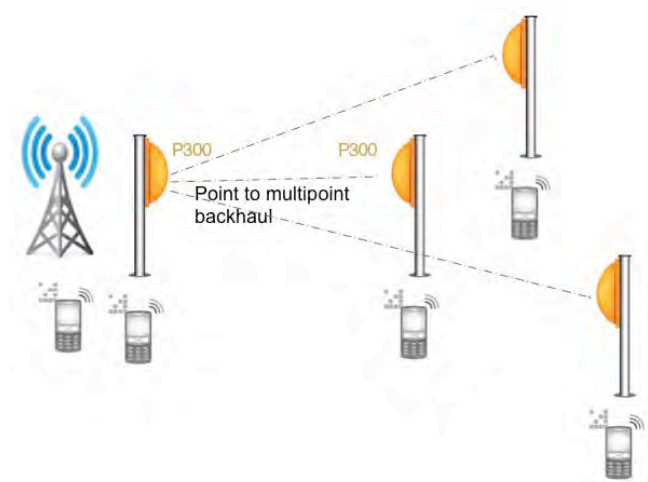
## VIDEO SURVEILLANCE

Zoneflex P300 offers reliable wireless streaming  
of surveillance video back to a central post



## POINT TO MULTI POINT

ZoneFlex P300 enables point to multi point backhaul  
bridging for up to 10 receiving bridges



## Specifications

PHYSICAL CHARACTERISTICS	
POWER	<ul style="list-style-type: none"> <li>802.3af Power over Ethernet</li> </ul>
PHYSICAL SIZE	<ul style="list-style-type: none"> <li>18 cm (L), 15 cm (W), 8.6 cm (H)</li> <li>7" (L), 5.9" (W), 3.4" (H)</li> </ul>
WEIGHT	<ul style="list-style-type: none"> <li>5.5 lbs (2.5kg) with adj bracket</li> <li>2.1 lbs (1kg) without adj bracket</li> </ul>
ANTENNA	<ul style="list-style-type: none"> <li>14 dBi internal directional antenna</li> <li>30 degree 3dB beamwidth</li> <li>Two external N-Type antenna connectors</li> </ul>
ETHERNET PORTS	<ul style="list-style-type: none"> <li>1 port, auto MDX, auto-sensing 10/100/1000 Mbps, RJ-45</li> <li>Power over Ethernet (802.3af)</li> </ul>
LOCK OPTION	<ul style="list-style-type: none"> <li>Pad-Eye for locking devices</li> </ul>
ENVIRONMENTAL CONDITIONS	<ul style="list-style-type: none"> <li>IP-67 rated</li> <li>Operating air temperature: -40°C to 65°C (-40°F to 149°F)</li> </ul>
POWER DRAW	<ul style="list-style-type: none"> <li>Quiescent 6.5W</li> <li>Typical 7.5W</li> <li>Peak 11W</li> </ul>

WI-FI	
STANDARDS	<ul style="list-style-type: none"> <li>IEEE 802.11ac</li> <li>5GHz operation</li> </ul>
MODULATION	<ul style="list-style-type: none"> <li>OFDM</li> </ul>
RADIO CHAINS	<ul style="list-style-type: none"> <li>2 x 2</li> </ul>
SPATIAL STREAMS	<ul style="list-style-type: none"> <li>2</li> </ul>
RF POWER OUTPUT	<ul style="list-style-type: none"> <li>22 dBm*</li> </ul>
CHANNELIZATION	<ul style="list-style-type: none"> <li>20MHz, 40MHz, and/or 80MHz</li> </ul>
FREQUENCY BAND	<ul style="list-style-type: none"> <li>IEEE 802.11ac: 5.15 – 5.875 GHz</li> </ul>
WIRELESS SECURITY	<ul style="list-style-type: none"> <li>WPA2 AES</li> </ul>
CERTIFICATIONS**	<ul style="list-style-type: none"> <li>U.S., Europe, Argentina, Australia, Brazil, Canada, Chile, China, Colombia, Costa Rica, Hong Kong, India, Indonesia, Israel, Japan, Korea, Malaysia, Mexico, Peru, Philippines, Russia, Saudi Arabia, Singapore, South Africa, and Taiwan</li> <li>WEEE/RoHS compliance</li> </ul>

\* Maximum power varies by country setting, band, and MCS rate

\*\*Refer to price list for most current country certifications

MANAGEMENT	
CONFIGURATION	<ul style="list-style-type: none"> <li>Web User Interface (HTTP/S)</li> <li>CLI (Telnet/SSH), SNMP v1, 2, 3</li> </ul>

RF	
MAXIMUM EIRP*	<ul style="list-style-type: none"> <li>Up to 36 dBm</li> </ul>
PHYSICAL ANTENNA GAIN	<ul style="list-style-type: none"> <li>Up to 14 dBi</li> </ul>
MINIMUM RX SENSITIVITY	<ul style="list-style-type: none"> <li>Up to -96 dBm</li> </ul>

PERFORMANCE AND CAPACITY	
TARGET UDP THROUGHPUT*	<ul style="list-style-type: none"> <li>Up to 500 Mbps</li> <li>Up to 250 Mbps at 2.6 km/1.6 mi</li> <li>Up to 100 Mbps at 8 km/4 mi**</li> </ul>
MAXIMUM LINK DISTANCE***	<ul style="list-style-type: none"> <li>12 kilometers</li> </ul>
POINT-TO-MULTIPOINT	<ul style="list-style-type: none"> <li>30 degrees of coverage from the one root bridge with internal antenna to many receiving bridges</li> <li>120 degrees of coverage when used with optional external antenna</li> </ul>

\*Throughputs and range may vary depending upon regulatory restrictions, operating band, channel width and interference environment

\*\*When used with 24 dBi external antennas

\*\*\*When used with internal directional antenna

## Product Ordering Information

MODEL	DESCRIPTION
<b>SmartZone P300 802.11ac 5 GHz Outdoor Wireless Bridge</b>	
901-P300-XX02	P300, Pre-Provisioned Pair, outdoor 802.11ac 2X2:2 bridge, 5 GHz internal antenna, optional antenna support, one ethernet port, PoE input, includes mounting brackets and one year warranty. Does not include PoE injector, power adapters, optional external antennas or optional external RF cables
901-P300-XX01	P300, single unit, outdoor 802.11ac 2X2:2 bridge, 5 GHz internal antenna, optional antenna support, one ethernet port, PoE input, includes mounting brackets and one year warranty. Does not include PoE injector, power adapters, optional external antennas or optional external RF cables
<b>Optional Accessories</b>	
911-2101-DP01	5 GHz high gain directional antenna, dual-polarized 21 dBi gain and 10 degrees 3 dBm beamwidth‡
911-2401-DP01	High gain directional antenna, dual-polarized 24.5 dBi V gain/23.5 dBi H gain and 7-9 degrees 3 dBm beamwidth‡
911-1212-DP01	5 GHz directional antenna, dual-polarized 12.5 dBi gain and 120 degrees 3 dBm beamwidth‡
902-0162-XXYY	Spare, PoE Adapter, 10/100/1000BaseT, with country specific power adapter

‡ including one dual plane adjustable wall/pole mounting kit and two 1m RF cables with N-Type connectors.

PLEASE NOTE: When ordering, you must specify the destination region by indicating -US, -WW