

Scalable Enterprise WiFi System with Revolutionary Software Controller

The UniFi Enterprise WiFi System is a scalable enterprise access point solution designed to be easily deployed and managed. The Access Point has a sleek design and can be easily mounted to a ceiling tile or wall using the included mounting hardware. It is powered using the included Power over Ethernet adapter so that you can provide power and data using a single cable.

The UniFi Enterprise WiFi System includes the UniFi Controller software. The software installs on any PC within the network and is easily accessible through any standard web browser. Using the UniFi Controller software, an Enterprise WiFi network can be instantly configured and administered without any special training. Real-time status, automatic UniFi device detection, map loading, and advanced security options are all seamlessly integrated.



Features

- Aesthetic industrial design with unique LED provisioning ring
- Sleek wall-mountable and ceiling tile mountable design (all accessories included)
- Includes Power over Ethernet capability for single cable wiring (supplies both power and data)
- Virtual UniFi Controller software interface (no expensive WiFi hardware controller/switch needed)
- Highly intuitive setup and configuration with many powerful features (no special training needed)
- Scalable to hundreds of devices while maintaining a single unified management system

Specifications

| | |
|---------------------------|---|
| Dimensions | 20 x 20 x 3.65 cm |
| Weight | 290 g (430 g with mounting kits) |
| Ports | Ethernet (Auto MDX, auto-sensing 10/100 Mbps) |
| Buttons | Reset |
| Antennas | 2 Integrated (supports 2x2 MIMO with spatial diversity) |
| Wi-Fi Standards | 802.11 b/g/n* |
| Power Method | Passive Power over Ethernet (12-24V) |
| Power Supply | 24V 1A PoE Adapter included |
| Maximum Power Consumption | 4W |
| Max TX Power | 23 dBm |
| BSSID | Up to four per radio |
| Power Save | Supported |
| Wireless Security | WEP, WPA-PSK, WPA-TKIP, WPA2 AES, 802.11i |
| Certifications | CE, FCC, IC |
| Mounting | Wall/Ceiling (Kits included) |
| Operating Temperature | -10°C to 70°C (14°F to +158° F) |
| Operating Humidity | 5% - 80% Condensing |

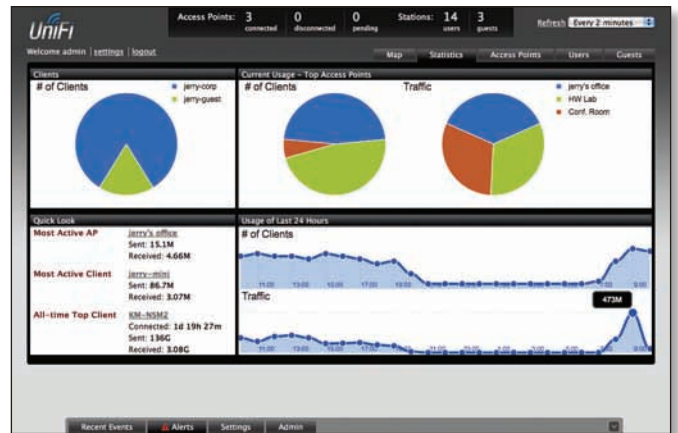
Advanced Traffic Management

| | |
|-------------------------|--|
| VLAN | 802.1Q |
| Advanced QoS | WLAN prioritization |
| Guest Traffic Isolation | Supported |
| WMM | Voice, video, best effort, and background |
| Concurrent Clients | 100+ |

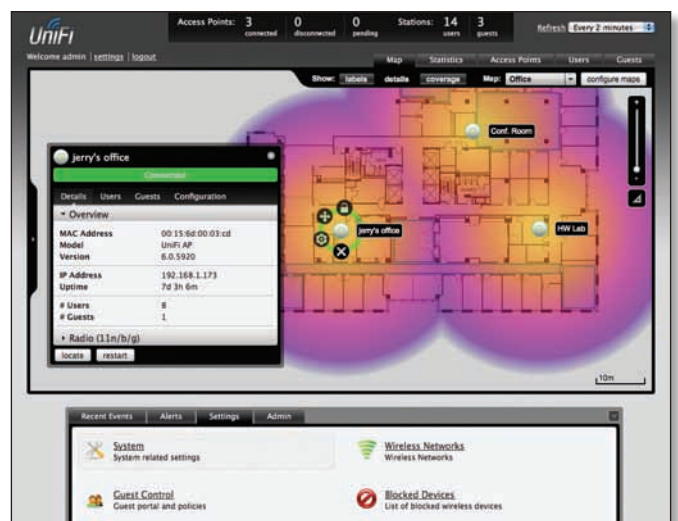
Supported Data Rates (Mbps)

| | |
|---------|--|
| 802.11n | MCS0 - MCS15 (6.5 Mbps to 300 Mbps), HT 20/40 |
| 802.11b | 1, 2, 5.5, 11 |
| 802.11g | 6, 9, 12, 18, 24, 36, 48, 54 |

* 2.4GHz



Network performance analytics provide the administrator with overall network usage and distribution of traffic inside the UniFi WiFi Enterprise deployment.



Add a map of your deployment and view real-time status information and coverage areas.

