



UniFi VIDEO[®]

High-Definition IP Video Surveillance System

Scalable Day and Night Surveillance

Advanced Hardware and Optics for 1080p Full HD Video

Powerful Features and Analytic Capabilities



UniFi VIDEO[®]

The UniFi[®] Video Cameras G3 represent the next generation of cameras designed for use in the UniFi Video surveillance management system. These cameras offer 1080p Full HD resolution for day or night use and are integrated with the UniFi Video software for powerful and flexible, integrated IP video management.

The cameras are easy to operate and manage using the UniFi Video[®] software, which is pre-installed on the optional UniFi Application Server and the UniFi NVR appliance, or can be downloaded free of charge.

Cameras

Model: UVC-G3-AF

The UniFi Video Camera G3 features clear 1080p video resolution. The ball-joint mount offers flexible 3-axis adjustment and can be mounted indoors or outdoors. The camera has infrared LEDs with an automatic IR cut filter for day and night surveillance. Available as a single- or 5-pack.

- 1080p Full HD, 30 FPS
- EFL 3.6 mm, $f/1.8$
- Outdoor Weather Resistant
- 802.3af PoE or 24V Passive PoE
- Built-in Microphone
- Wall, Ceiling, or Pole Mount
- High-Power IR Range Extender Accessory (Sold Separately)



Model: UVC-G3-PRO

The UniFi Video Camera G3 Pro features a powered zoom lens and crisp 1080p video performance with infrared capability. The versatile 3-axis mount enables indoor or outdoor installation of the camera. The camera has infrared LEDs with an automatic IR cut filter for day and night surveillance. Available as a single pack.

- 1080p Full HD, 30 FPS
- EFL 3-9 mm, $f/1.2$ to $f/2.1$
- Wide-Angle/Zoom Lens
- IP67-Rated Weather Resistance
- Enhanced Low-Light Performance
- Integrated High-Power Infrared LEDs
- 802.3af/802.3at PoE
- Built-in Microphone
- Wall, Ceiling, or Pole Mount



Model: UVC-G3-DOME

The UniFi Video Camera G3 Dome features a wide-angle lens and 1080p video performance for expanded surveillance coverage. Mounting options include wall or ceiling installations. The infrared LEDs and an automatic IR cut filter provide day and night monitoring. Available as a single- or 5-pack.

- 1080p Full HD, 30 FPS
- EFL 2.8 mm, $f/2.0$
- Wide-Angle Lens
- 802.3af PoE or 24V Passive PoE
- Built-in Microphone
- Wall or Ceiling Mount



Model: UVC-G3-MICRO

The UniFi Video Camera G3 Micro features a wide angle lens and 1080p video resolution. Multiple mounting options allow the camera to be installed almost anywhere indoors for permanent or temporary surveillance. The infrared LEDs and mechanical IR cut filter enable uninterrupted surveillance. The built-in microphone and speaker enable two-way audio communication. Available as a single- or 5-pack.

- 1080p Full HD, 30 FPS
- EFL 2.7 mm, $f/2.2$
- Dual-Band Wi-Fi
- 24V Passive PoE
- Mic and Speaker for Two-Way Audio
- Permanent Mount: Wall or Ceiling
- Temporary Mount: Magnetic or Table Stand



Example of Wall-Mounted UVC-G3-AF



Example of Pole-Mounted UVC-G3-AF

Management

UniFi Application Server

Model: UAS-XG

The UniFi Application Server features pre-installed UniFi Video software that lets you immediately deploy the UniFi Application Server to configure and manage your UniFi Video Cameras G3. Each 2 TB hard drive provides up to 4800* recording hours at 480p, 1600* recording hours at 720p, or 700* recording hours at 1080p.



UniFi NVR

Model: UVC-NVR-2TB

The UniFi NVR is a plug-and-play NVR appliance with pre-installed UniFi Video software to configure and manage the UniFi Video Cameras G3. Its 2 TB hard drive provides up to 4800* recording hours at 480p, 1600* recording hours at 720p, or 700* recording hours at 1080p.



* Numbers can vary depending on the frame rate.

Accessories

IR Range Extender

Model: UVC-G3-LED

The IR Range Extender is an accessory that enhances the night vision range of the UVC-G3-AF camera.

- Enhances Night Vision Recordings
- Extends IR Range up to 25 m (82 ft)
- Six High-Intensity Infrared LEDs
- Powered and Controlled by the UVC-G3-AF



UniFi SWITCH

Gigabit PoE Switch

Models:
 US-8, US-8-60W, US-8-150W
 US-16-150W
 US-24-250W, US-24-500W
 US-48-500W, US-48-750W



Connect and power all of your UniFi Video Cameras with a UniFi PoE Switch, a managed switch featuring configurable 802.3af/at PoE+.

- Up to 48 Ethernet Ports
- Up to 10G SFP+ Connectivity
- Non-Blocking Line Rate Performance
- Enterprise-Class Reliability



Software

The UniFi Video software is pre-installed on the UniFi NVR for quick and easy deployment. The UniFi Video software can also be downloaded and installed on a Windows or Linux-based system.

Features

Feature-Packed User Interface Accessible from a web browser, the UniFi Video interface was designed to be easy to use yet packed with advanced features. The UniFi Video interface is incredibly intuitive and loaded with powerful features such as detailed statistical reporting, multiple views, versatile camera settings, advanced analytics, and customizable event recordings.

Plug and Play Installation Automatic camera detection in the UniFi Video software makes it easy to install and deploy cameras. UniFi Video Camera settings are integrated into the UniFi Video software. Configure camera settings, reboot the camera, or upgrade the firmware from the UniFi Video interface.

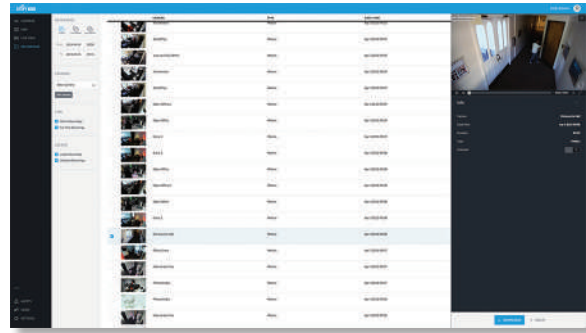
Camera-Based Motion Detection The UniFi Video cameras handle motion detection instead of the server, relieving the workload on the server and ensuring that compression and noise won't affect motion detection.

Additional Live Views Playlists can be created with a configurable live camera feed rotation. Define the cameras you want included in the playlist and how long you want them to appear on the screen before moving on to the next live feed.

Disk Management Features UniFi Video has automatic recording management to free up disk space. User-definable disk space and date-based auto purge allow users to keep a set amount of free disk space or automatically delete recordings after a certain number of days. Another storage feature is the ability to map external USB or network storage drives.

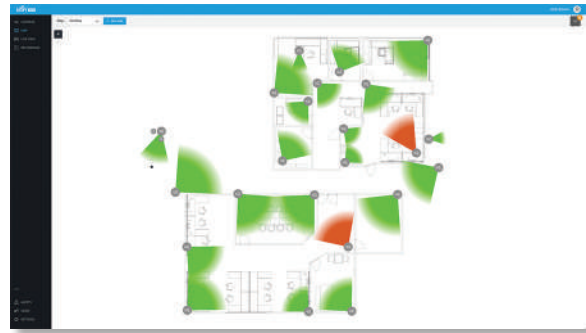
Cost-Effective Solution Shattering conventional industry thinking, Ubiquiti offers UniFi Video's powerful IP surveillance software at no additional cost. No huge upfront costs, no monthly subscription fees.

Mobile App UniFi Video may be accessed from iOS and Android™ using the UniFi Video mobile app.



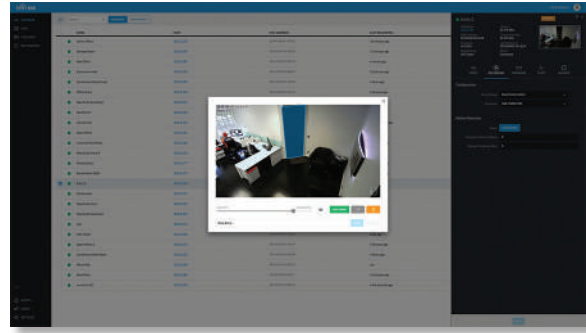
Event Recordings

UniFi Video software provides a variety of options and settings to customize what your cameras record.



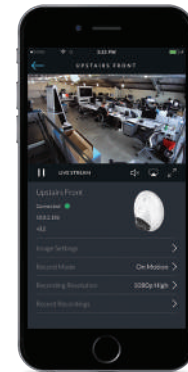
Maps

Upload a map of your location(s) or use Google Maps to represent the areas where your cameras are located.



Powerful Analytic Capabilities

Customize your own motion detection zones. You can place several zones and set their alarm sensitivity levels as high or low as the situation demands.





Specifications

UVC-G3-AF	
Dimensions	Ø 75 x 140 mm (Ø 2.95 x 5.51")
Weight	300 g (10.58 oz)
Enclosure	Injection-Molded Polycarbonate and Die-Cast Aluminum
Networking Interface	(1) 10/100 Ethernet Port
Sensor	1/3" 4-Megapixel HDR Sensor
Lens	EFL 3.6 mm, f/1.8
Night Mode	IR LEDs with Mechanical IR Cut Filter
Microphone	Yes
Button	Factory Reset Button
Power Method	802.3af PoE or 24V Passive PoE
Power Supply	802.3af PoE Switch
Maximum Power Consumption	
Standalone	4W
With Optional IR Extender	9W
Mounting	Wall/Ceiling/Pole
Operating Temperature	-20 to 50° C (-4 to 122° F)
Operating Humidity	20 - 90% Noncondensing

Video	
Video Compression	H.264
Resolution	1080p Full HD (1920x1080)
Maximum Frame Rate	30 FPS
Image Settings	Brightness, Contrast, Sharpness, Saturation, Noise Reduction, 50/60 Hz

General	
Viewing Angle	
Before Lens Correction	85° (H), 44.8° (V), 98.1° (D)
After Lens Correction	72° (H), 42.9° (V), 80.4° (D)
Supported UniFi Video Version	UniFi Video 3.8 (or Newer)
UniFi Video System Requirements	64-bit Microsoft Windows 10/8/7, Ubuntu 14.04 or 16.04, or Debian 7.0 System with an Intel or Compatible 1.86 GHz (or Above) Processor and a Minimum of 4 GB RAM



Specifications



UVC-G3-PRO	
Dimensions	Ø 86 x 153 mm (Ø 3.39 x 6.02")
Weight	700 g (1.5 lb)
Networking Interface	(1) 10/100 Ethernet Port
Sensor	Sony IMX290, 1/2.8"
Lens	3X Powered Zoom Lens, 3-9 mm, f/1.2 - f/2.1
Night Mode	IR LED Illumination and IR Cut Filter
Microphone	Yes
Button	Factory Reset Button
Power Method	802.3af/802.3at PoE
Power Supply	802.3af/802.3at PoE Switch
Maximum Power Consumption	12.5W
Mounting	Wall/Ceiling/Pole
Operating Temperature	-20 to 50° C (-4 to 122° F)
Operating Humidity	0 - 90% Noncondensing
Weatherproofing	IP67

Video	
Video Compression	H.264
Resolution	1080p Full HD (1920x1080)
Maximum Frame Rate	30 FPS
Image Settings	Flip, Brightness, Contrast, 50/60 Hz Flicker Reduction, WDR, Hue, Sharpness, Saturation, Noise Reduction

General	
Viewing Angle Wide Zoom	108° (H), 58° (V), 125° (D) 37° (H), 20° (V), 43° (D)
Supported UniFi Video Version	UniFi Video 3.9 (or Newer)
UniFi Video System Requirements	64-bit Microsoft Windows 10/8/7, Ubuntu 14.04 or 16.04, or Debian 7.0 System with an Intel or Compatible 1.86 GHz (or Above) Processor and a Minimum of 4 GB RAM



Specifications



UVC-G3-DOME	
Dimensions	Ø 132 x 60 mm (Ø 5.20 x 2.36")
Weight	260 g (9.17 oz)
Networking Interface	(1) 10/100 Ethernet Port
Sensor	1/3" 4-Megapixel HDR Sensor
Lens	EFL 2.8 mm, f/2.0
Night Mode	IR LEDs with Mechanical IR Cut Filter
Microphone	Yes
Button	Factory Reset Button
Power Method	802.3af PoE or 24V Passive PoE
Power Supply	802.3af PoE Switch or 24V, 0.5A PoE Adapter (Included with Single-Pack)
Maximum Power Consumption	4W
Mounting	Wall/Ceiling
Operating Temperature	-30 to 70° C (-22 to 158° F)
Operating Humidity	20 - 90% Noncondensing

Video	
Video Compression	H.264
Resolution	1080p Full HD (1920x1080)
Maximum Frame Rate	30 FPS
Image Settings	Brightness, Contrast, Sharpness, Saturation, Noise Reduction, 50/60 Hz

General	
Viewing Angle Before Lens Correction After Lens Correction	100.4° (H), 59.1° (V), 117.3° (D) 87.8° (H), 55.4° (V), 96.4° (D)
Supported UniFi Video Version	UniFi Video 3.2 (or Newer)
UniFi Video System Requirements	64-bit Microsoft Windows 10/8/7, Ubuntu 14.04 or 16.04, or Debian 7.0 System with an Intel or Compatible 1.86 GHz (or Above) Processor and a Minimum of 4 GB RAM



Specifications

UVC-G3-MICRO	
Dimensions Body Base	Ø 51.38 x 41.97 mm (Ø 2.02 x 1.65") Ø 36 x 17.3 mm (Ø 1.42 x 0.68")
Weight Body Base	65 g (2.29 oz) 31 g (1.09 oz)
Networking Interface	802.11 a/b/g/n, 2.4 GHz/5 GHz Dual-Band Wi-Fi
Sensor	1/3" 4-Megapixel Sensor with WDR
Lens	EFL 2.7 mm, f/2.2
Night Mode	IR LEDs with Removable IR Cut Filter, Built-in Light Sensor
Microphone	Yes (with Microphone Volume Control)
Button	Factory Reset Button
Power Method	100-240VAC, 50-60 Hz or 802.3af PoE with Included Instant PoE Adapter
Power Supply	100-240VAC, 50/60 Hz Adapter or 802.3af PoE Switch with Included Instant PoE Adapter
Maximum Power Consumption	IR LEDs On: 3.5W IR LEDs Off: 2W
Mounting	Magnetic Base/Wall/Table
Operating Temperature	0 to 35° C (32 to 95° F)
Operating Humidity	20 - 90% Noncondensing

Video	
Video Compression	H.264
Resolution	1080p Full HD (1920x1080)
Maximum Frame Rate	30 FPS
Image Settings	Flip, Brightness, Contrast, AE Mode (50/60 Hz), WDR, Hue, Infrared, Sharpness, Saturation, Noise Reduction

General	
Viewing Angle LDC Off LDC On	124° (H), 65° (V), 150° (D) 92° (H), 6° (V), 100° (D)
Supported UniFi Video Version	UniFi Video 3.8 (or Newer)
UniFi Video System Requirements	64-bit Microsoft Windows 10/8/7, Ubuntu 14.04 or 16.04, or Debian 7.0 System with an Intel or Compatible 1.86 GHz (or Above) Processor and a Minimum of 4 GB RAM



Specifications

UAS-XG	
Dimensions	442.4 x 305.5 x 43.7 mm (17.42 x 12.03 x 1.72")
Weight	
Without Mount Brackets	6.5 kg (14.33 lb)
With Mount Brackets	6.6 kg (14.55 lb)
Processor	Intel Xeon D-1521
Memory	32 GB DDR4
On-Board Flash Storage	M.2 SSD 120 GB
Hard Drive Capacity	(2) 2 TB HDDs (Pre-Installed)
Interfaces	
Networking Interfaces	(2) 1/10 Gbps RJ45 Ethernet Ports
IPMI Interface	(1) 1 Gbps RJ45 Ethernet Port
VGA Interface	(1) VGA Port
USB	(2) USB 3.0 Ports (Back Panel) (2) USB 2.0 Ports (Front Panel)
Bluetooth Low Energy	Bluetooth 4.0
Power Consumption	
Maximum	150W
Typical	60W
Power Method	100-240VAC/50-60 Hz, Universal Input
Power Supply	100-240VAC, 2 to 4A, 50 to 60 Hz
Certifications	CE, FCC, IC

UniFi Video Software	
Software	Browser-Based Interface, Tablets, and Smartphones Supported
System Setup	Plug-and-Play Installation, Automatic Camera Detection
NVR Camera Support	Recommended for up to 50 UniFi Video Cameras
Supported Devices	Operating Systems: Windows, Apple, and Linux Browsers: Chrome, Internet Explorer 10 (or above), Firefox, and Safari Smartphones: iPhone and Android
Media Format	MP4 (H.264/AAC)
Scheduling	Day/Time/Camera Scheduled Video Recording/Motion Detection/Email Alerts
Views	Multiple Camera Live Grid View, Recorded Video Playback, Full Screen, Windowed

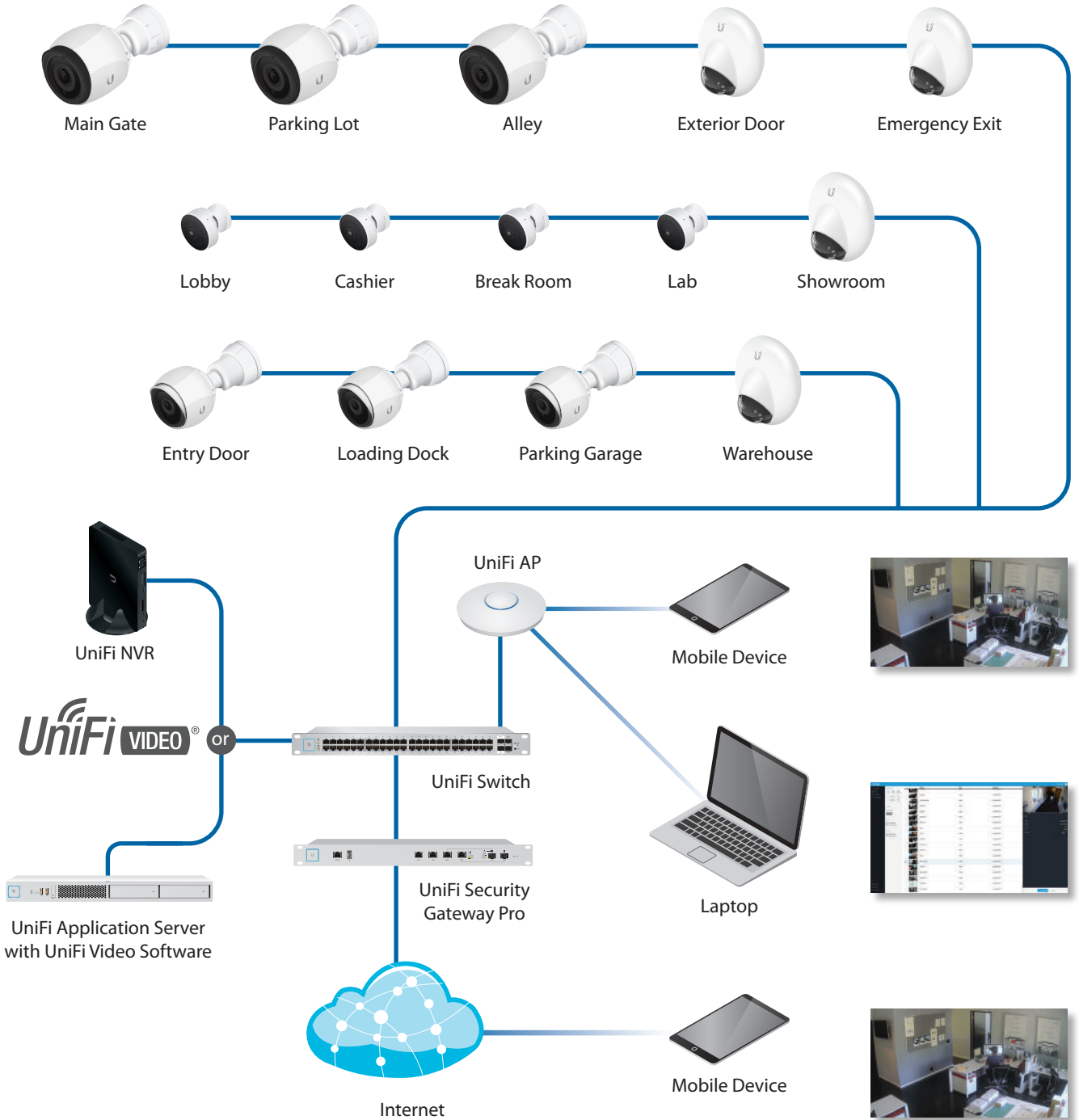


Specifications

UVC-NVR-2TB	
Dimensions	135 x 190 x 25 mm (5.31 x 7.48 x 0.98")
Weight	483 g (17 oz)
Processor	Intel D2550
Memory	4 GB
Hard Drive Capacity	2 TB
Ports	(1) 10/100/1000 Ethernet
Power Supply	65W, 19V, 3.42A
Certifications	CE, FCC, IC

UniFi Video Software	
Software	Browser-Based Interface, Tablets, and Smartphones Supported
System Setup	Plug-and-Play Installation, Automatic Camera Detection
NVR Camera Support	Recommended for up to 20 UniFi Video Cameras
Supported Devices	Operating Systems: Windows, Apple, and Linux Browsers: Chrome, Internet Explorer 10 (or above), Firefox, and Safari Smartphones: iPhone and Android
Media Format	MP4 (H.264/AAC)
Scheduling	Day/Time/Camera Scheduled Video Recording/Motion Detection/Email Alerts
Views	Multiple Camera Live Grid View, Recorded Video Playback, Full Screen, Windowed

UniFi VIDEO[®] System Example



UniFi Switch Compatibility

The UniFi Video Cameras G3 are compatible with the UniFi Switches listed below (✓ indicates compatibility).

Camera Model	US-8	US-8-60W	US-8-150W	US-16-150W	US-24-250W	US-24-500W	US-48-500W	US-48-750W
UVC-G3-AF	✓	✓	✓	✓	✓	✓	✓	✓
UVC-G3-DOME	✓	✓	✓	✓	✓	✓	✓	✓
UVC-G3-MICRO*	✓	✓	✓	✓	✓	✓	✓	✓
UVC-G3-PRO	–	✓	✓	✓	✓	✓	✓	✓

* Includes Instant 802.3af PoE Converter

Related Product Datasheets



UniFi Switch 8, UniFi Switch 8-60W:

[dl.ubnt.com/datasheets/unifi/UniFi Switch 8_DS.pdf](https://dl.ubnt.com/datasheets/unifi/UniFi_Switch_8_DS.pdf)



UniFi PoE Switches:

[dl.ubnt.com/datasheets/unifi/UniFi PoE Switch.pdf](https://dl.ubnt.com/datasheets/unifi/UniFi_PoE_Switch.pdf)