

Ubiquiti EdgeMAX ER-8 EdgeRouter with DPI for SDN's

Product Name: Ubiquiti EdgeMAX ER-8 EdgeRouter with DPI for SDN's



Manufacturer: Ubiquiti Networks

Model Number: ER-8

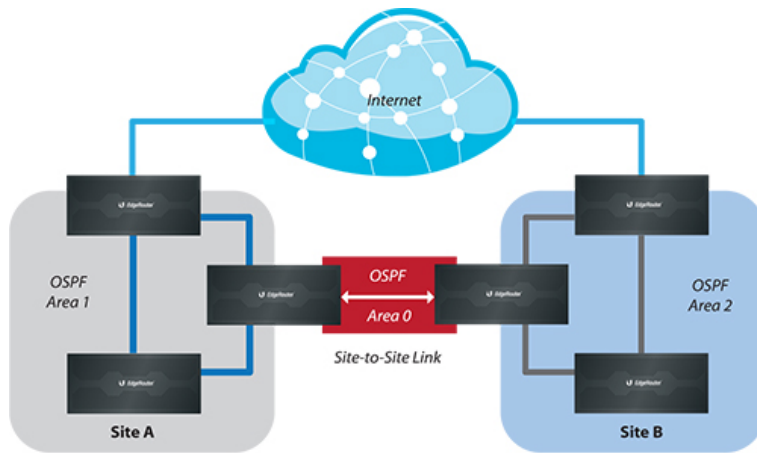
Ubiquiti EdgeMAX ER-8 EdgeRouter with DPI for SDN's

The Ubiquiti EdgeMAX ER-8 is an 8 Gigabit RJ45 Port router that offers a higher performance of 2 million packets per second, hardware switching, and powerful EdgeOS software. The ER-8 EdgeRouter is rack mountable.

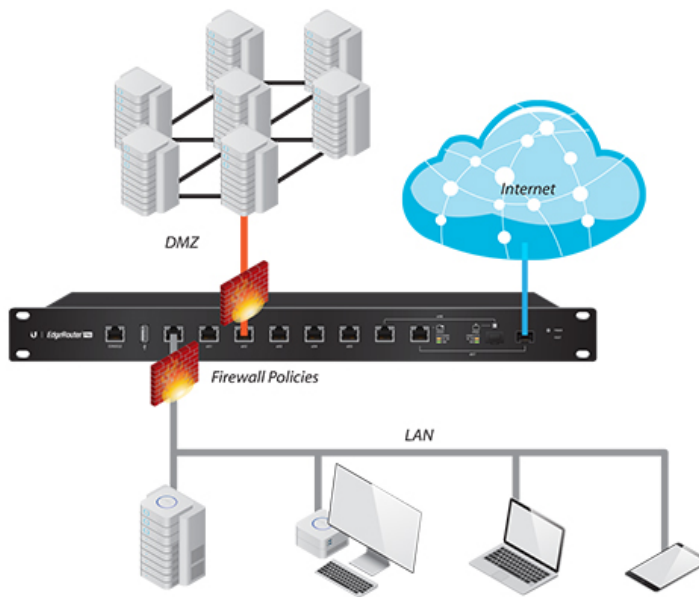
Ubiquiti EdgeMAX EdgeRouter Key Features

- Performance - 2 million pps
- 8 Gigabit RJ45 Ports
- 8 Gbps for packets 512 bytes or larger in size
- Rackmountable

Ubiquiti EdgeMAX ER-8 EdgeRouter with DPI for SDN's



Typical Service Provider Deployment



Example of Enterprise Deployment with SFP Connection to the Internet

Ubiquiti EdgeMAX ER-8 EdgeRouter with DPI for SDN's

Ubiquiti EdgeMAX EdgeRouter - Technical Specifications General

- Dimensions: 484 x 164 x 44 mm (19.06 x 6.46 x 1.73 in)
- Weight: 2.3 kg (5.07 lb)
- Max. Power Consumption: 35 W
- Power Method: Universal AC Power Cord (C5)
- Power Supply: Internal AC/DC Power Adapter, 60W (24V, 2.5A)
- Supported Voltage Range: 100 - 240VAC, 50/60 Hz
- Button: Reset
- LEDs Per Data Port: Speed/Link/Activity
- Networking Interfaces: - Serial Console Port: (1) RJ45 Serial Port - Data Ports: (8) 10/100/1000 Ethernet Ports
- Layer 3 Forwarding Performance: - Packet Size: 64 Bytes: 2,000,000 pps - Packet Size: 512 Bytes or Larger: 8 Gbps (Line Rate)
- Processor: Dual-Core 800 MHz, MIPS64 with Hardware Acceleration for Packet Processing
- System Memory: 2 GB DDR3 RAM
- On-Board Flash Storage: 4 GB
- Mounting: Rack
- Operating Temperature: -10 to 45° C (14 to 113° F)
- Operating Humidity: 10 - 90% Non-Condensing
- Certifications: CE, FCC, IC

Price: £276.15
