

## Ubiquiti airFiber 5U 5.9GHz and 6GHz, 1Gbps+, FDD, 100Km+ Point to Point Radio - Single Unit



Product Name: Ubiquiti airFiber 5U 5.9GHz and 6GHz, 1Gbps+, FDD, 100Km+ Point to Point Radio - Single Unit

Manufacturer: Ubiquiti Networks

Model Number: AF-5U

Ubiquiti airFiber 5U 5.9GHz and 6.0GHz, 1Gbps+, FDD, 100km+ PtP Radio - Single Unit (AF-5U)

The Ubiquiti airFiber 5U Single Unit is a revolutionary backhaul point-to-point radio in the 5.9 and 6.0GHz frequencies, with a range of up to 100Km+ at incredible 1Gbps+ speeds. The airFiber 5U takes advantage of a new alignment user interface with features such as modulation rate display and local / remote unit RSSI.

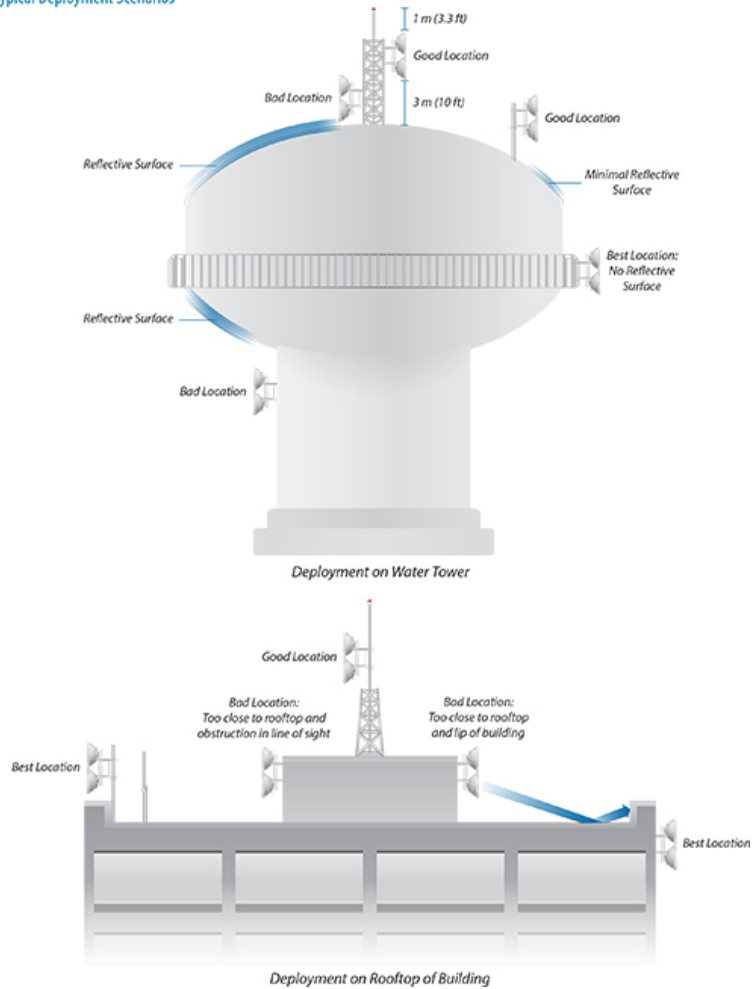
Ubiquiti airFiber 5U 5.9GHz and 6GHz Key Features

- 1Gbps+ throughput
- 50MHz channel
- Full Duplex
- 100Km+ Range
- Brand new alignment UI
- Industry disruptive price point
- Product Model Number: AF-5U



# Ubiquiti airFiber 5U 5.9GHz and 6GHz, 1Gbps+, FDD, 100Km+ Point to Point Radio - Single Unit

## Typical Deployment Scenarios



## Ubiquiti airFiber 5U 5.9GHz and 6GHz, 1Gbps+, FDD, 100Km+ Point to Point Radio - Single Unit

### Ubiquiti airFiber 5U - Technical Specifications General

- Dimensions:- Radio: 938.4 x 468.4 x 281.4 mm (36.94 x 18.44 x 11.08") - Box: 1042 x 573 x 502 mm (41.02 x 22.56 x 19.76")
- Weight:- Radio (Mount Included): 16 kg (35.27 lb) - Box: 26.5 kg (58.42 lb)
- Max. Power Consumption: 40W
- Power Supply: 50V, 1.2A PoE GigE Adapter (Included)
- Power Method: Passive Power over Ethernet
- Supported Voltage Range: +42 to +58VDC, -48VDC
- Automatic Transmit Power Control (ATPC): Yes
- Certifications: CE, FCC, IC
- Mounting: Pole Mount Kit (Included)
- Wind Loading: 863 N @ 200 km/hr (194 lbf @ 125 mph)
- Wind Survivability: 200 km/hr (125 mph)
- Operating Temperature: -40 to 55&deg; C (-40 to 131&deg;F)
- LEDs (12) Status LEDs:- Data Port Link/Activity- Data Port Speed- Management Port Link/Activity- Management Port Speed- GPS Synchronisation- Master/Slave- Link Status- Modulation Mode 0.25x to 4x, 6x, 8x, 10x (Unlabeled), Overload - Remote and Local Displays (Calibrated Signal Strength)

### Operating Frequency

- FCC 15.247, IC RSS-210: 5725 - 5850 MHz
- ETSI EN 302 502: 5725 - 5875 MHz
- Other Regions: 5725 - 6200 MHz

### Interface

- Data Port: (1) 10/100/1000 Ethernet Port
- Management Port: (1) 10/100 Ethernet Port
- Auxiliary Port: (1) RJ-12, Alignment Tone Port

### System

- Maximum Throughput: 1.2+ Gbps
- Maximum Range: 100+ km (Dependent on Regulatory Region)
- Packets per Second: 1+ Million
- Encryption: 128-Bit AES
- Uplink/Downlink Ratio: 50% Fixed
- Latency:- Full Duplex Mode: < 200 &micro;s at Full Throughput - Half Duplex Mode: < 2 ms at Full Throughput
- Radio Frame Synchronisation: GPS
- Dynamic Frequency Selection: CE (FCC/IC Not Applicable)
- MTU (Maximum Transmission Unit): Up to 9600

### Suggested Max. TX Power

- 10x: 39 dBm
- 8x: 43 dBm
- 6x: 45 dBm

## Ubiquiti airFiber 5U 5.9GHz and 6GHz, 1Gbps+, FDD, 100Km+ Point to Point Radio - Single Unit

- 4x and below: 47 dBm

### Radio Frequency

- GPS: GPS Clock Synchronisation

### Transceiver

- EIRP: ~50 dBm (Dependent on Regulatory Region and Frequency Band)
- Frequency Accuracy:-  $\pm 2.5$  ppm without GPS Synchronisation-  $\pm 0.2$  ppm with GPS Synchronisation
- Channel Bandwidth: 10/20/30/40/50 MHz
- Modulation:- 1024QAM MIMO- 256QAM MIMO- 64QAM MIMO- 16QAM MIMO- QPSK MIMO-  $\frac{1}{2}$ ; Rate QPSK xRT-  $\frac{1}{4}$ ; Rate QPSK xRT

### Integrated Split Antenna

- TX Gain: 23 dBi
- RX Gain: 23 dBi
- Beamwidth: 6°
- Front-to-Back Ratio: 70 dB
- Polarity: Dual-Slant Polarisation
- Cross-Polarity Isolation:  $> 28$  dB

**Price: £831.60**

---