

Ubiquiti EdgeSwitch ES-8-150W 8 Port 150W



Product Name: Ubiquiti EdgeSwitch ES-8-150W 8 Port 150W

Manufacturer: Ubiquiti Networks

Model Number: ES-8-150W

Please Note: If you need a storage cabinet for this product, please select from the Available Product Options above. See All-Rack for full details.

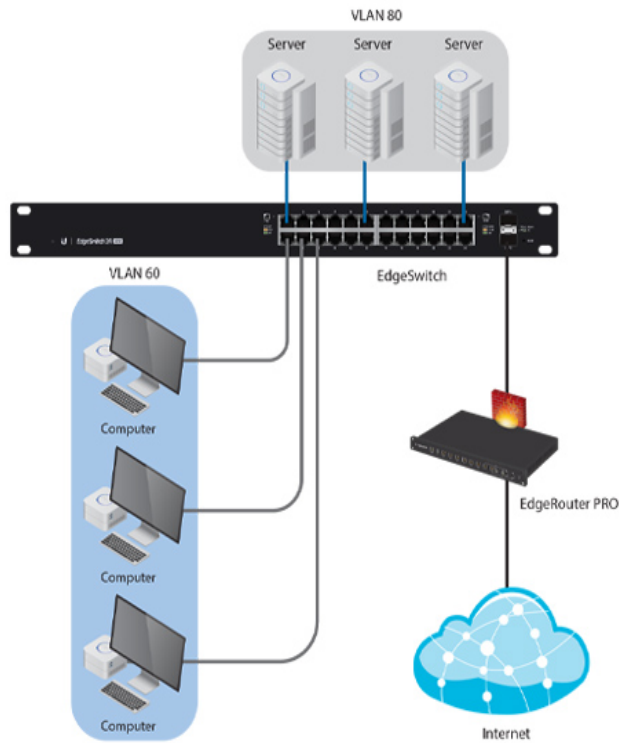
Ubiquiti EdgeSwitch ES-8-150W 8 Port 150W

The Ubiquiti EdgeSwitch 8 Port 150W is a fully managed, fanless, high-performance, PoE+ Gigabit switch. It delivers powerful performance and intelligent switching with its 10 independent switching ports. A DC input option is included for flexibility. Ubiquiti EdgeSwitch 8 150W (ES-8-150W) Key Features

- Total Non-Blocking Throughput 10 Gbps
- Gigabit RJ45 Ports 8
- SFP Ports 2
- Max. Power Consumption 150W
- PoE PoE+ and 24V Passive PoE

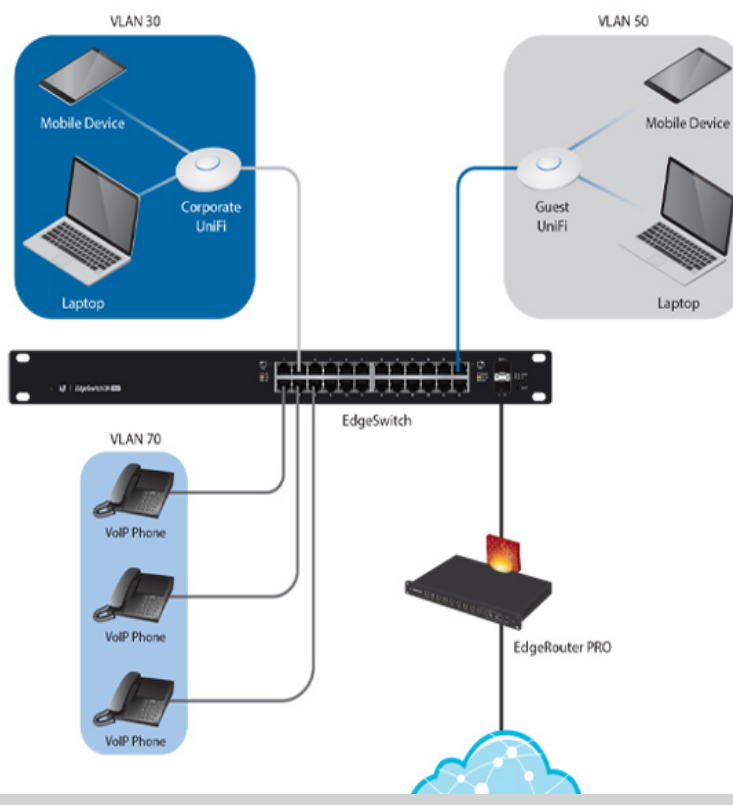
Ubiquiti EdgeSwitch ES-8-150W 8 Port 150W

Deployment Examples



VLANs for Servers and Computers

The EdgeSwitch connects to the Ubiquiti EdgeRouter™ PRO via an SFP uplink.



Ubiquiti EdgeSwitch ES-8-150W 8 Port 150W

Ubiquiti EdgeSwitch 8 150W (ES-8-150W) - Technical Specifications General

- Dimensions: 204 x 43 x 235 mm (8.03 x 1.69 x 9.25")
- Weight: - Without Mount Brackets: 1.72 kg (3.79 lb) - With Mount Brackets: 1.8 kg (3.96 lb)
- Total Non-Blocking Throughput: 10 Gbps
- Switching Capacity: 20 Gbps
- Forwarding Rate: 14.88 Mpps
- Max. Power Consumption: - Includes PoE Output: 150W - Excludes PoE Output: 20W
- Power Method: - AC: 100-240VAC/50-60 Hz, AC/DC Integrated PSU, Universal Input - DC: 42 to 56VDC External, (Self-Correcting Polarity Protection) Terminal Block Input
- Power Supply: AC/DC, Internal, 150W DC
- LEDs Per Port: - RJ45 Data Ports: PoE, Speed/Link/Activity - SFP Data Ports: Speed/Link/Activity
- Networking Interfaces: - (8) 10/100/1000 Mbps RJ45 Ethernet Ports - (2) 1 Gbps SFP Ethernet Ports
- Management Interface: (1) RJ45 Serial Port, Ethernet In/Out Band
- Certifications: - CE - FCC - IC
- Wallmount: Yes
- ESD/EMP Protection: Air: \pm 24 kV, Contact: \pm 24 kV
- Operating Temperature: - Internal AC/DC @ 150W: -25 to 45 $^{\circ}$ C (-13 to 113 $^{\circ}$ F) - Internal AC/DC @ 100W: -25 to 55 $^{\circ}$ C (-13 to 131 $^{\circ}$ F) - External DC: -25 to 60 $^{\circ}$ C (-13 to 140 $^{\circ}$ F)
- Operating Humidity: 5 to 95% Noncondensing
- Shock and Vibration: ETSI300-019-1.4 Standard
- PoE Interfaces: - POE+ IEEE 802.3af/at (Pins 1, 2+, 3, 6-) - 24VDC Passive PoE (Pins 4, 5+, 7, 8-)
- Max. PoE+ Wattage per Port by PSE: 34.2W
- Voltage Range 802.3at Mode: 50-57V
- Max. Passive PoE Wattage per Port: 17W
- 24V Passive PoE Voltage Range: 20-27V

PoE Per Port

- PoE Interfaces: - POE+ IEEE 802.3af/at (Pins 1, 2+, 3, 6-) - 24VDC Passive PoE (Pins 4, 5+, 7, 8-)
- Max. PoE+ Wattage per Port by PSE: 34.2W
- Voltage Range 802.3at Mode: 50-57V
- Max. Passive PoE Wattage per Port: 17W
- 24V Passive PoE Voltage Range: 20-27V

Price: £154.20